

TOOLS

CURV-O-MARK



PIPE AND TOOL MARKING ACCESSORIES

Curv-o-mark layout tool and systems have earned a reputation for quality and consistency across a wide range of industries. Easy to use and made for an extended working life, these are tools to help bring precision to any layout task.

PIPE MARKERS



LEVELS AND FLANGE ALIGNING TOOLS

WRAP-A-ROUND



EASY TO USE

For a wide range of industries



DURABILITY

Extended working life



PRECISION

For any layout task

COMING SOON

Jackson Safety® Measuring and Marking Tools

CURV-O-MARK®
-PLUS-

NEW

TOOLS

PIPE MARKERS

CENTERING HEAD – MAGNETIC FOR THOSE DIFFICULT ANGLES

- Fitted with an **adjustable dial bubble protractor**, this timeefficient mechanism can be used to locate and mark centre points on a pipe or specific angles.
- The PipePro Centring Head has been engineered with a **“Y” shaped** body design and a **2-1/2° increment degree-dial that rotates 360°’s**.
- The centre pin has been produced using **CNC manufactured Hardened and tempered Carbon Steel**.
- Magnets in the legs allow a **hands-free approach**, encouraging a safer and more accurate layout mark.

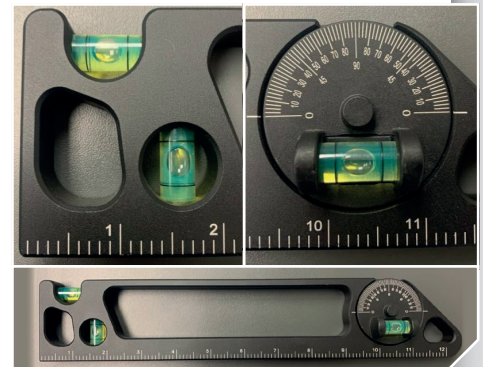


Product No	Description	Case Qty/MOQ
J1979	PipePro Centring head AL medium	1
J1980	PipePro Centring head AL large	1

LEVELS AND FLANGE ALIGNING TOOLS

MULTI ANGLE SPIRIT LEVEL – MAGNET CLAMPING

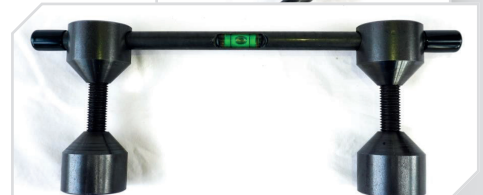
- The PipePro Spirit Level is a lightweight, durable and multi purpose level which includes an **adjustable protractor dial** and **magnetic base** to easily determine and set up angles.
- There are **two stationery vials** placed at 90° angles of each other which can be read from any surface of the level.
- This level has a **12” ruler** along its base for easy and precise measurements.
- Magnets on the bottom of the level allow a **hands-free approach**, encouraging a safer and more accurate work environment.



Product No	Description	Case Qty/MOQ
J1981	PipePro Aluminum level	1

FLANGE ALIGNMENT TOOL WITH VIAL LEVEL

- The PipePro Flange Alignment Tool is a **multifaceted pipefitting tool** used for alignment and finding/setting angles. Flange pins included.
- The Pipe Flange Aligner saves valuable fit-up time (up to 50% more efficient) while eliminating the frustration of balancing a level on the pins.
- Produced using **CNC manufactured Hardened and tempered Carbon Steel**.
- **Bubble vials** in both the pins and straight bar allow for perfect alignment.



Product No	Description	Case Qty/MOQ
J1982	PipePro Flange Aligner Tool	1

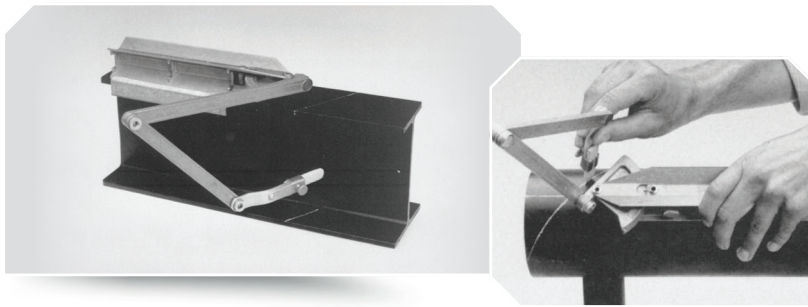
HEALTH SAFETY PRODUCTIVITY
Finding a better way

PIPE MARKERS

CONTOUR MARKERS

The Contour Marker consists of an X frame, calibrated protractor, and a triple-jointed marking arm adjustable to the line to be scribed. A soapstone crayon is required for each radius marker (not supplied). Contour marker is a compact tool design, time saving tool used to lay out pipe and structural steel joints. Ideal for quick precise layout of laterals at any angle, tees, wyes, crosses, elbows - any type or size of joint (for use on same size pipe intersections). Eliminates mathematical formulas. Can be used to lay out pipe from 1-1/2" (3.8 cm) to 18" (45.7 cm) diameter or structural steel members up to 18" (45.7 cm) in a right side up or upside down position.

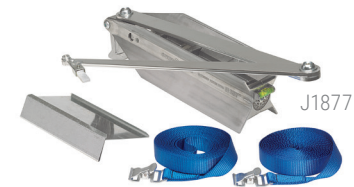
EU Prod. No	US Prod. No	Description	Pipe Diameter	Case Qty/ MOQ
J1874	14771	#1 Marker standard	1.5" (3.8 cm) to 18" (45.7 cm) diameter	1
J1875	14772	#2 Adaptor standard	Use with #1 Contour Marker	1
J1877	14773	#4 Marker jumbo	8" (20.3 cm) to 48" (121.9 cm) diameter	1
J1878	14774	#5 Adaptor jumbo	Use with #4 Contour Marker	1



J1874



J1875



J1877



J1878

RADIUS MARKERS

Radius Markers have sturdy friction joints to maintain rigidity and accuracy, and are made from lightweight, rustproof aluminium for extended life. A soapstone crayon is required for each radius marker. Models available in 4 sizes for scribing circles up to 80°.

EU Prod. No	US Prod. No	Description	Pipe Diameter	Case Qty/ MOQ
J1884	14780	Radius marker mini	Up to 8" (20.3 cm) in radius	1
J1885	14781	Radius marker small	Up to 20" (50.8 cm) in radius	1
J1886	14782	Radius marker standard	Up to 24" (61 cm) in radius	1
J1887	14783	Radius marker jumbo	Up to 40" (101.6 cm) in radius	1



J1884



J1885



J1886



J1887

CENTERING HEADS

Centering Heads aid in the settings of centerlines, establishing angles and marks for butt-ins, locating points inside pipes and tanks, laying out keyways and measuring declivity.

EU Prod. No	US Prod. No	Description	Pipe Diameter	Case Qty/ MOQ
J1879	14775	#6 Centering head standard	1/2" (1.3 cm) to 4" (10.2 cm) diameter	1
J1880	14776	#7 Centering head jumbo	1" (2.5 cm) + diameter	1



J1879

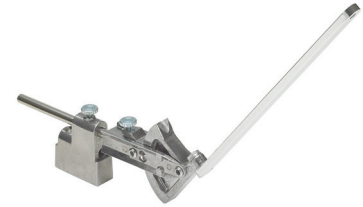


J1880



PROTRACTOR

This 90-degree protractor has a matching locking lever to set and hold the tool at the desired angle. It is equipped with a 5/8 in. by 10 in. tapered arm to complete finding of angles or desired bends, or to determine any portions of elbows. The tool is mounted in a 3/4-in wide frame with a 3/8-in. by 6-in cast-in rod. It comes with a 25-pound pull magnetic base for holding the protractor frame in position. The unit can be used manually or with a magnetic base.



J1882

EU Product No	US Product No	Description	Case Qty/MOQ
J1882	14778	Protractor	1

CIRCLE ECLIPSE PROJECTOR

Ideal for creating perfect circles, ellipses or oblong circles on any irregular flat or round surface. Can be used to lay out lateral intersections of different diameter pipes, or to project circles from 1-1/2" to 18" diameter on flat surfaces intersecting at angles from 0-70 degree from vertical. Features a protractor with sliding rod and an adjustable lever to lock in the specified layout. Strong, 20-pound pull magnetic base holds the Projector in position during layout. Durable web strap (included) holds the unit secure on non-magnetic surfaces and can be used on either side of the vertical column. The Projector is equipped with a soapstone crayon and also works with chalk, pencil or steel scribe.



J1888

EU Product No	US Product No	Description	Case Qty/MOQ
J1888	14784	Circle eclipse projector	1

MULTI TRAMMEL HEADS

Using standard half inch pipe as a trammel bar, heads feature radius set points cast in alignment with marking pointers for easy setting. Equipped with 1/4" (0,6 cm) screws and squared on the back side of perpendicular alignment. The stationary head holds a 1/4" (0,6 cm) case hardened center point. Moveable head has a 1/8" (0,3 cm) steel scribe hardened. Marks from 1-1/2" circle to any diameter needed, depending on length of pipe used as a trammel bar. Allen wrench, soapstone, scribe and pointer also included.



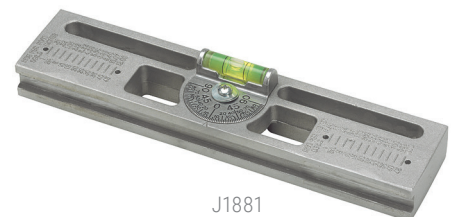
J1890

EU Prod. No	US Prod. No	Description	Pipe Diameter	Case Qty/MOQ
J1890	14785	#19 Multi trammel heads	All	1

LEVELS AND FLANGE ALIGNING TOOLS

PRO-MAG LEVEL

A lightweight, easy to use tool for determining angles. Unit is ideal for the pipe fitter, welder, jig builder or anyone who has to determine angles or do setup work. Includes two cast-in 25-pound (11.3 kg) pull magnets that hold securely to any steel surface. Unit has a 360° adjustable DSL with two 90° quadrants graduated in 2-1/2° increments. Cast in tables are used to convert degree-of-angle to rise-in-inches-per-foot or millimeters-per-meter. A groove on the bottom edge permits use on a small pipe.



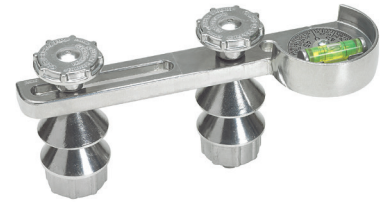
J1881

EU Prod. No	US Prod. No	Description	Case Qty/MOQ
J1881	14777	#8 Pro-mag level	1

DIAL ANGLE FLANGE LEVEL

A versatile tool that can be used as a dial degree utility level or, with attachments, for two holding flange alignment.

EU Prod. No	US Prod. No	Description	Case Qty/MOQ
J1891	14786	#20 Dual-Angle Flange Level—Nonmagnetic; can be used on PVC Pipe	1



J1891

UNIVERSAL LEVEL

Universal level is a multi-purpose tool that features a 360° adjustable protractor dial that ensures accurate leveling and permits setting a predetermined pitch of a string of pipe, setting the angle of laterals to a precise degree, trueing vertical runs & two-holding flanges. For structural steel workers, the powerful holding magnets provide an extra hand. Electricians will find the level useful in laying out and lining up heavy conduit.

EU Prod. No	US Prod. No	Description	Case Qty/MOQ
J1904	14796	#33 Universal Level	1



J1904

PIPE FLANGE ALIGNER

Fast, accurate pipe construction is possible with this self-determining flange aligning tool. The Aligner inserts easily into pipe, centers snugly against the inside pipe diameter and automatically aligns with the pipe axis.

EU Prod. No	US Prod. No	Description	Case Qty/MOQ
J1883	14779	#10 Pipe Flange Aligner	1



J1883

UNIVERSAL LEVEL

The DSL is an adjustable bubble protractor used with a number of Curv-O-Mark Tools. The protractor covers 180 degrees through two 90 degree quadrants, reading in 2.5 degree increments. The bubble is cast in the aluminium dial.

EU Prod. No	US Prod. No	Description	Pipe Diameter	Case Qty/MOQ
J1905	14797	Contour Dial-Set-Level (DSL)	Adjustable Bubble Protractor	1



J1905

FLANGE ALIGNER BASE

Removes the difficulty of flange aligning and squaring. Tool holds a square in the needed position without tying up one's hands. Base is notched at either end for ease in aligning on the center line of the pipe. Two 25-pound (11.3 kg) pull, cast-in magnets for holding either a flat horizontal or vertical position. Base accepts either leg of a standard or combination aluminum square and works on pipe diameters from 1", requiring only the extension of the legs of the square being used to accommodate larger diameters.

EU Prod. No	US Prod. No	Description	Case Qty/MOQ
J1903	14795	#32 Flange Aligner Base	1



J1903



CENTERING PIN

A hardened steel pin for use with the standard centering head. Suitable for marking, but should not be used as a center punch.

EU Prod. No	US Prod. No	Description	Case Qty/MOQ
J1906	14798	Centering pin	1



J1906

WRAP-A-ROUND

Inexpensive tools for marking straight lines around pipe; made from flexible gasket material, providing resistance to both heat and cold. All Wrap-A-Rounds are available in two colours. These designate material type and service temperature. GG (grey) material is used for high temperature applications (up to 550°F) and B (black) material is used for temperatures up to 350°F. Both material types are asbestos free.



350°F (176°C)
BLACK

**HIGH
TEMPERATURE**

ASBESTOS FREE

550°F (288°C)
GREY



EU Prod. No	US Prod. No	Description	Color	Temperature	Size	Pipe Diameter	Case Qty/MOQ
J1858	14752	Wrap-a-round 164B EX medium	Black	350°F (176°C)	3.88" (9.8 cm) x 4' (1.2 m)	3" (7.6 cm) to 6" (15.2 cm)	1
J1859	14753	Wrap-a-round 176B large	Black	350°F (176°C)	3.88" (9.8 cm) x 6' (1.8 m)	3" (7.6 cm) to 10" (25.4 cm)	1
J1860	14754	Wrap-a-round 177B EX large 7'	Black	350°F (176°C)	5" (12.7 cm) x 7' (2.1 m)	4" (10.2 cm) to 12" (30.5 cm)	1
J1861	14756	Wrap-a-round 179B EX large 9'	Black	350°F (176°C)	5" (12.7 cm) x 9' (2.7)	6" (15.2 cm) to 16" (40.6 cm)	1
J1867	14763	Wrap-a-round 164GG medium	Grey	550°F (288°C)	3.88" (9.8 cm) x 4' (1.2 m)	3" (7.6 cm) to 6" (15.2 cm)	1
J1868	14764	Wrap-a-round 176GG large	Grey	550°F (288°C)	3.88" (9.8 cm) x 6' (1.8 m)	3" (7.6 cm) to 10" (25.4 cm)	1
J1869	14766	Wrap-a-round 177GG EX large 7'	Grey	550°F (288°C)	5" (12.7 cm) x 7' (2.1 m)	4" (10.2 cm) to 12" (30.5 cm)	1
J1870	14767	Wrap-a-round 179GG EX large 9'	Grey	550°F (288°C)	5" (12.7 cm) x 9' (2.7)	6" (15.2 cm) to 16" (40.6 cm)	1