

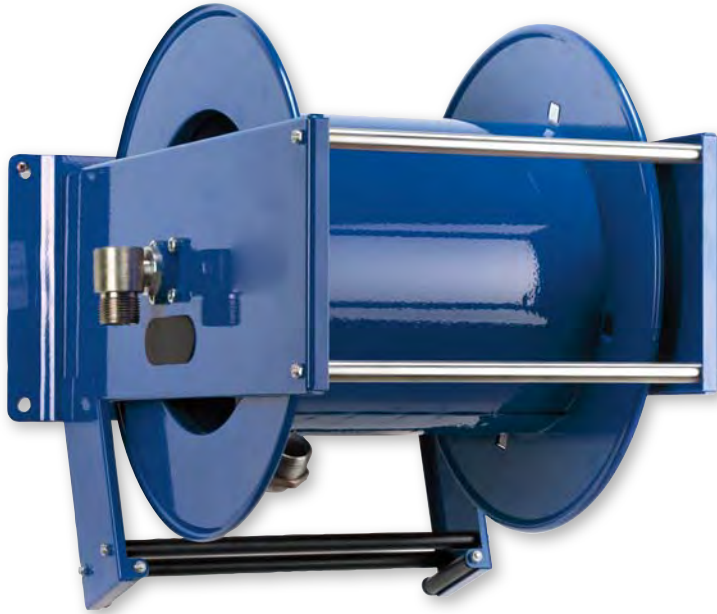
Heavy duty series  $\varnothing$  max 3/4" - up to 30 m length  
 $\varnothing$  max 1" - up to 25 m length

Automatic rewind, spring-driven hose reel, **heavy duty series**, in painted steel or in stainless steel AISI 304, suitable for hoses of max 30 m length ( $\varnothing$  hose 3/4") or max. 25 m length ( $\varnothing$  hose 1").

The art.no. 36400 is equipped with a twin spring for a convenient hose rewind.

The hose reel is supplied without hoses and can be used with hoses for the supply of oils, antifreeze, diesel, compressed air and water at low pressure. Please see catalogue pages 164 and 165 for the selection of the required hoses.

On demand the hose reels can also be supplied with a **spring brake kit**; please add suffix **"/HB"** to the article number (f. ex. 36100/HB)



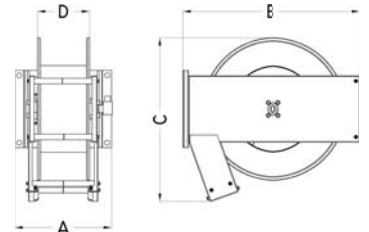
Art.no. **39502**  
Art.no. **39500**



Art.no. **39602**  
Art.no. **39601**  
Art.no. **39608**



On demand the stainless steel hose reels can also be supplied in accordance with directive ATEX 2014/34/EU - group II - category 2.



Art.no.	Material	Max working pressure	Connection threads IN - OUT	Internal diameter swivel joint	Max diameter hose	Max length hose 3/4" - 1"	Suitable pivoting wall bracket	Included swivel joint	Dimensions (A-B-C) (mm)	Spool width (D)	Weight
<b>36200</b>	Painted steel	100 bar	1" (M) - 1" (F)	20 mm	1"	12 m - 8 m	39502	9970F	295x530x500	150 mm	21 Kg
<b>36100</b>						18 m - 15 m	39500		440x530x500	300 mm	24 Kg
<b>36400</b>						30 m - 25 m	-	500x530x540	400 mm	36 Kg	
<b>38360</b>	Stainless steel AISI 304	100 bar	1" (M) - 1" (F)	20 mm	1"	12 m - 8 m	39601	9970	295x530x500	150 mm	21 Kg
<b>38361</b>						18 m - 15 m	39602		440x530x500	300 mm	24 Kg
<b>37146</b>						30 m - 25 m	39608	500x530x540	400 mm	36 Kg	