

Automatic rewind, spring-driven hose reel, **heavy duty series**, in painted steel or in stainless steel AISI 304, suitable for hoses of max 40 m length (Ø hose 1/2").

The art.n. 37145 is equipped with a twin spring for a convenient hose rewind.

The hose reel is supplied without hoses and can be used with hoses for the supply of oils, antifreeze, diesel, compressed air and water at low pressure. Please see catalogue pages 164 and 165 for the selection of the required hoses.

On demand the hose reels can also be supplied with a **spring brake kit**; please add suffix **"/HB"** to the article number (f. ex. 36300/HB)



Art.no. **39502**
Art.no. **39505**

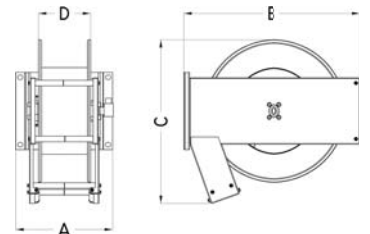


Art.no. **39602**
Art.no. **39601**
Art.no. **39600**
Art.no. **39605**

Hose Reels



On demand the stainless steel hose reels can also be supplied in accordance with directive ATEX 2014/34/EU - group II - category 2.



Art.no.	Material	Max working pressure	Connection threads IN - OUT	Internal diameter swivel joint	Max diameter hose	Max length hose	Suitable pivoting wall bracket	Included swivel joint	Dimensions (A-B-C) (mm)	Spool width (D)	Weight
36150	Painted steel	600 bar	1/2" (M) - 1/2" (F)	10 mm	1/2"	20 m	39502	9951	295x530x500	150 mm	21 Kg
36300				12 mm		25 m			39505	387x530x500	250 mm
38350	Stainless steel AISI 304	200 bar		10 mm		15 m	39600	9968	243x530x500	120 mm	21 Kg
38400				10 mm		20 m	39601		295x530x500	150 mm	21 Kg
37141				12 mm		25 m	39605		387x530x500	250 mm	26 Kg
37145				12 mm		40 m	39602		445x530x500	300 mm	36 Kg