

# HB300GS90FaPo\_800



**Do you work in narrow spaces?**

With our slewing cranes, you can pick up loads even next to the crane 90 degrees! This special crane passes nearly every door because it has only 800 mm width.

At a glance

LIFTING	
manual	✓
Compact hydraulic system	✗
Hydrobull pump	✓
electric	✗


DRIVING	
manual	✓
Steering handle	✗
FaPo	✓
electric	✗

OPERATING FREQUENCY	
up to 10 times per month	✗
up to 25 times per month	✗
up to 100 times per month	✓
more than 100 times per month	✗

LIFTING CAPACITY WITH HORIZONTAL JIB		
	max. 300 kg	✓
	140 kg at 1550 mm in front of the wheels	✓

Link to [www.hydrobull.de](http://www.hydrobull.de)

Here, you can find more information incl. videos, photos etc.



# INDUSTRIAL CRANES

with slewing function

## HB300GS90FaPo\_800

These original Hydrobull cranes with slewing function are counterweight cranes with a jib which can be manually slewed to the left. This is particularly advantageous in narrow aisles where the load to be lifted is to the right or left of the aisle and the aisle is too narrow for the complete crane to make a 90 degree turn.

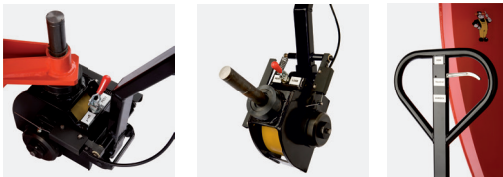
### LIFTING/LOWERING



Secured to a high-quality galvanised DIN-standard swivel hook with the original **Hydrobull pump with 4 power/lift settings**. The detailed description can be found in our Technical Information Sheet 1.

### Driving

Manually supported by the Hydrobull



mechanical **driving positioning device, FaPo®** for short. The detailed description can be found in our Technical Information Sheet 1.

### SLEWING

The jib can be manually slewed through 270°. For support, the pump lever extension can be attached to a pin on the column and increase the slewing force. The jib can also be locked in the slewed position with a brake latch in a perforated plate.

The special feature of the Hydrobull slewing cranes is that **no supports** are required. **The crane is always mobile and ready for use – even under load.**

### JIB

Has 13 setting which can be easily selected via 2two separate galvanised jibs using a socket pin system.

In addition, the jibs are secured with a squeeze-out lock to prevent accidents due to unintentional falling out. A mechanical telescopic jib which is adjustable under load is also available for an extra charge.

### PARKING

Is done easily and conveniently by turning a lever mounted on the guard of the FaPo steering wheel. **Manual machines are generally** not equipped with a travel brake.

### COUNTERWEIGHT

#### Attention!

The empty counterweight box is supplied fitted on the crane and is removable. On the right and left side are openings for attaching suitable lifting aids. After filling, these openings can be closed with the plastic caps supplied, so that no weight is lost. The counterweight box also has a lid for closing. The lid has a device that allows you to lock it with a customer-supplied padlock.

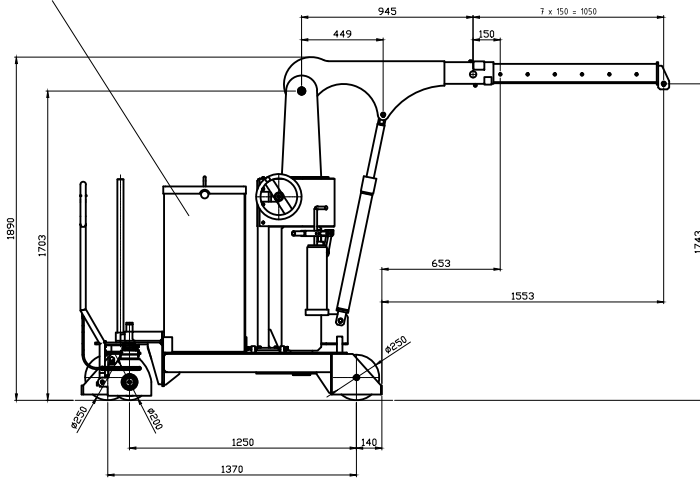
On request, we can fill the counterweight box for an additional charge. It is delivered as a separate package on a pallet and must be placed on the crane by you using suitable lifting equipment.

### OTHER

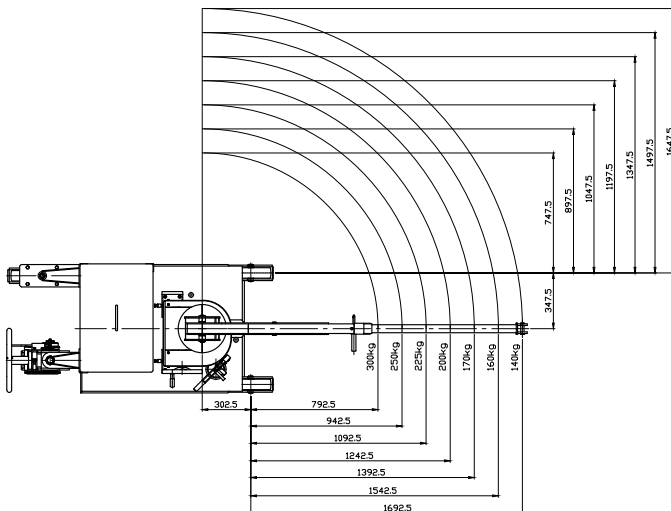
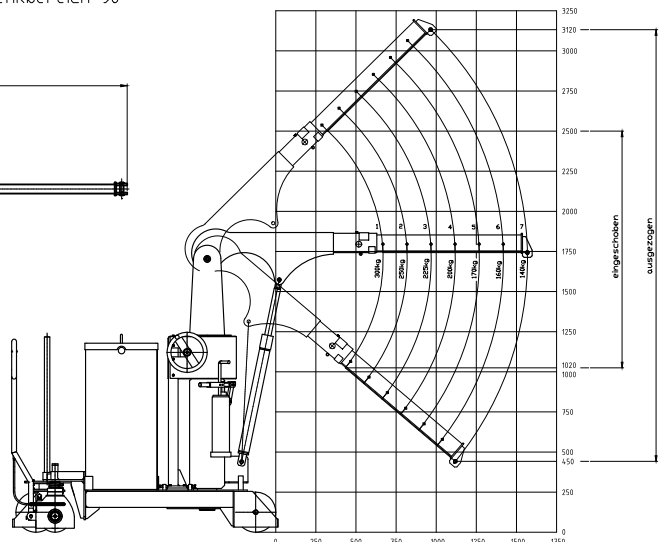
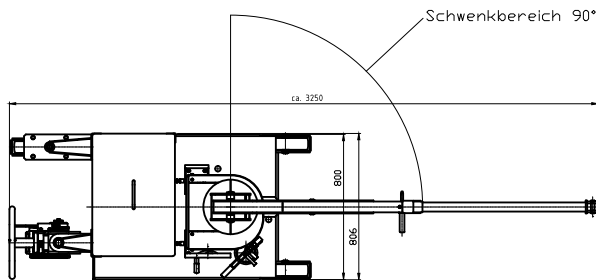
- Seal kits and other spare parts are available ex stock for both the cylinder and the pump
- Modern, protected design – only from Hydrobull
- Delivery incl. inspection book and operating instructions
- German Product
- Euronorm 2006/42/EC and DGUV68
- **2 Year Warranty**
- Spare parts for older machines on request

## Technical Drawings

zusätzliche Befüllung : 1056 kg



Eigengewicht des Krans ohne Gegengewichtsfüllung : 700 kg  
Gesamtgewicht : 1756 kg



Subject to technical modifications. Data subject to manufacturing tolerances.

## Technical specifications

### RATIO LIFTING CAPACITY, OUTREACH, LIFTING HEIGHT

Jib Position	Lifting capacity/kg	Load with horizontal jib/mm		Lift height*/mm	
		in front of the hydraulic system approx.	in front of the wheels approx.	min.	max.
1	300	650	650	850	2350
2	250	800	800	750	2450
3	225	950	950	650	2560
4	200	1100	1100	550	2670
5	170	1250	1250	450	2780
6	160	1400	1400	350	2890
7	140	1550	1550	250	3000

\* at hook mouth opening - please refer to the diagram for the reduced outreach

OTHER DETAILS		min.	max
Jib length from... to...		1100	2050
Length of wheelbase	mm		1250
Length of chassis incl. wheels	mm		1700
Length incl. inserted lowered jib Pos. 1	mm		2300
approx. aisle width for 90° turn	mm		-
Width of chassis external	mm		800
Width of chassis internal	mm		-
Clearance height, jib horizontal	mm		1890
Clearance height, jib lowered	mm		1920
Clearance	mm		-
Hook length approx.	mm		225
Ground clearance	mm		30
Load wheel	mm		3 x 250
Steering wheel	mm		200
Slewing	°		90
Tare weight - for counterweight cranes incl. empty box	kg		700
Required filling weight for counterweight cranes**	kg		1056
Batteries			-

\*\* Machine can only be used when installed



**Not the right machine? No problem!**

Fill out our form on [www.hydrobull.de](http://www.hydrobull.de) and we will happily produce a custom transport solution for you.