

HB2000GKB19FaPo



Do you have several lifting units and need to approach your loads/machines carefully?


The HB1000GKB can help with electric lifting and FaPo for exact positioning!

At a glance

LIFTING	
manual	✗
Compact hydraulic system	✗
Hydrobull pump	✗
electric	✓


DRIVING	
manual	✓
Steering handle	✗
FaPo	✓
electric	✗

OPERATING FREQUENCY	
up to 10 times per month	✗
up to 25 times per month	✗
up to 100 times per month	✗
more than 100 times per month*	✓

LIFTING CAPACITY WITH HORIZONTAL JIB		
	max. 2000 kg in front of the wheels	✓
	440 kg at 3125 mm in front of the wheels	✓

Link to www.hydrobull.de

Here, you can find more information incl. videos, photos etc.



* Please note the manual movement with FaPo! For longer distances we recommend the electric drive (RP)

ELECTRIC CRANES

with counterweight

HB2000GKB19FaPo

This original Elektrobull crane with counterweight has a rear-mounted chassis with counterweight box which allows it to directly approach loads and machines. The battery electric lift with cable remote control allows the operator to lift or lower the load from any point on the crane. The crane is also equipped with a driving positioning device (FaPo) developed by Hydrobull for driving support.

LIFTING/LOWERING



Secured on the high-quality, galvanized DIN safety hook **battery-powered at the push of a button on the manual switch**. Using the manual switch with approx. 3 metres of cable, the operator can flexibly operate the lifting and lowering independently of the crane. This means that you can stand close to the load to observe or assist the exact fitting. This gives more security and allows tasks to be completed faster.

DRIVING



Manually supported by the Hydrobull mechanical **driving positioning device, FaPo®** for short. A single person can easily manoeuvre and operate the machine with or without a load. The steering handle has a turning angle of almost 180 degrees which allows the crane to be turned almost on its front wheels, resulting in a small turning circle. The detailed description can be found in our **Technical Information Sheet 1**.

JIB

Has 13 setting which can be easily selected via 2two separate galvanized jibs using a socket pin system. In addition, the jibs are secured with a squeeze-out lock to prevent accidents.

PARKING

The machine is easily and conveniently locked in place by turning a lever on the FaPo steering wheel. Manual machines are generally not equipped with a travel brake.

COUNTERWEIGHT

ATTENTION!

Only use with filled box!

You can fill the box with steel plates yourself.



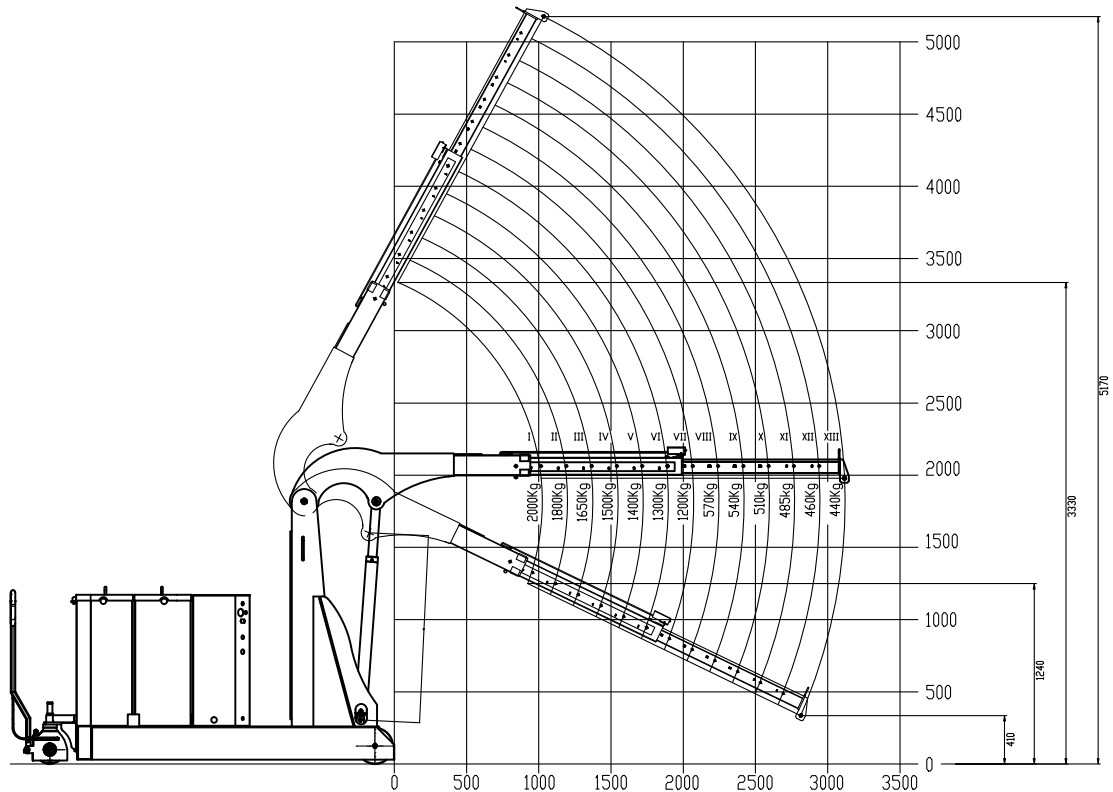
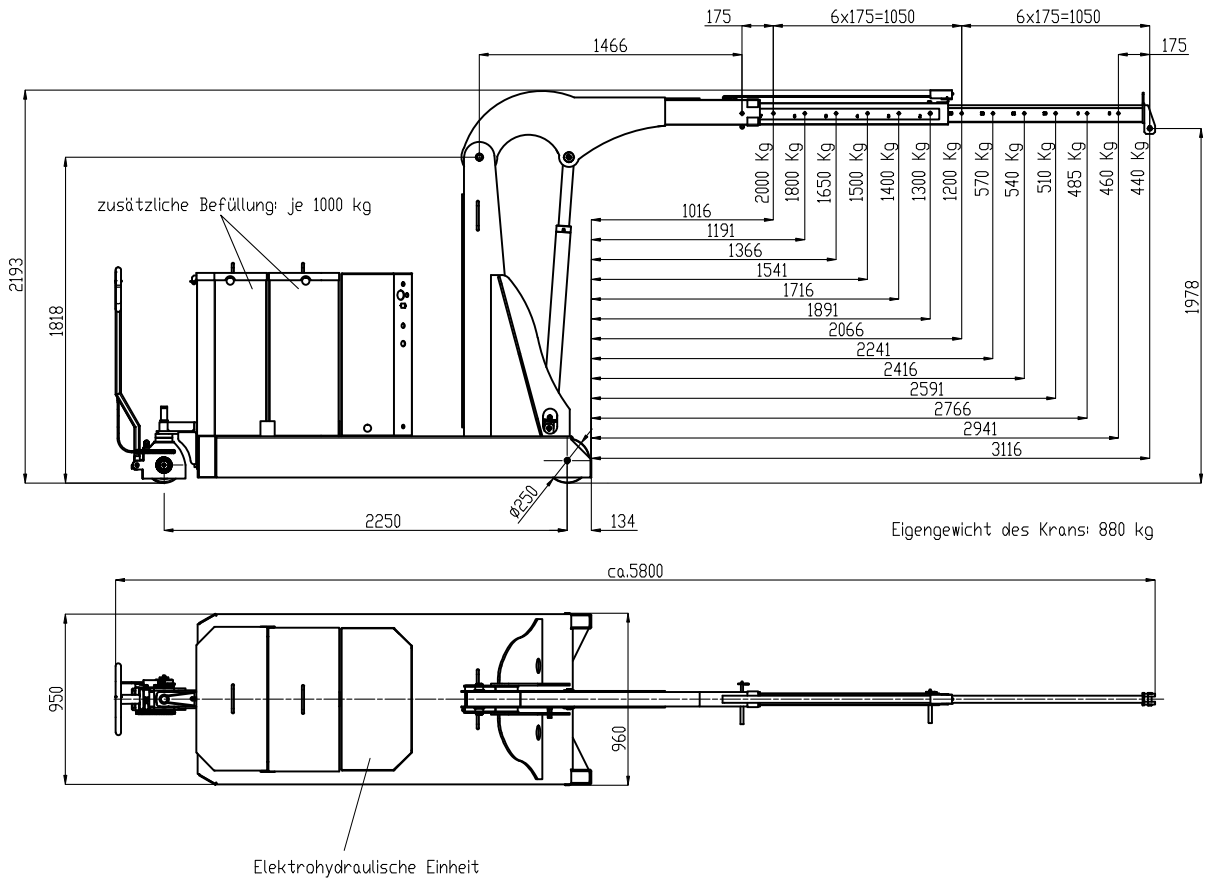
The empty counterweight box is supplied fitted on the crane and is removable. On the right and left side are openings for attaching suitable lifting aids. After filling, these openings can be closed with the plastic caps supplied, so that no weight is lost. The counterweight box also has a lid for closing. The lid has a device that allows you to lock it with a customer-supplied padlock.

On request, we can fill the counterweight box for an additional charge. It is delivered as a separate package on a pallet and must be placed on the crane by you using suitable lifting equipment.

OTHER

- Modern, protected design – only from Hydrobull
- Delivery incl. inspection book and operating instructions
- German Product
- Euronorm 2006/42/EC and DGUV68
- **2 Year Warranty**

Technical Drawings



Subject to technical modifications. Data subject to manufacturing tolerances.

Technical specifications

RATIO LIFTING CAPACITY, OUTREACH, LIFTING HEIGHT

Jib Position	Lifting capacity/kg	Load with horizontal jib/mm		Lift height*/mm	
		in front of the hydraulic system approx.	in front of the wheels approx.	min.	max.
1	2000	1075	1025	1010	3030
2	1800	1250	1200	930	3170
3	1650	1425	1375	850	3310
4	1500	1600	1550	770	3450
5	1400	1825	1725	700	3600
6	1300	1950	1900	630	3760
7	1200	2125	2075	575	3920
8	570	2300	2250	520	4080
9	540	2475	2425	450	4240
10	510	2650	2600	380	4390
11	485	2825	2775	300	4530
12	460	3000	2950	220	4670
13	440	3175	3125	140	4810

* at hook mouth opening - please refer to the diagram for the reduced outreach

OTHER DETAILS

		min.	max.
Jib length from... to...		1650	3750
Length of wheelbase	mm		2250
Length of chassis incl. wheels	mm		2620
Length incl. inserted lowered jib Pos. 1	mm		3670
approx. aisle width for 90° turn	mm		3600
Width of chassis external	mm		950
Width of chassis internal	mm		-
Clearance height, jib horizontal	mm		2200
Clearance height, jib lowered	mm		2080
Clearance	mm		-
Hook length approx.	mm		330
Ground clearance	mm		30
Load wheel	mm		250
Steering wheel	mm		200
Slewing			-
Tare weight - for counterweight cranes incl. empty box	kg		960
Required filling weight for counterweight cranes**	kg		2000
Batteries	Ah		4 x 70
Charger - external	A		20

** Machine can only be used when installed



Not the right machine? No problem!

Fill out our form on www.hydrobull.de and we will happily produce a custom transport solution for you.