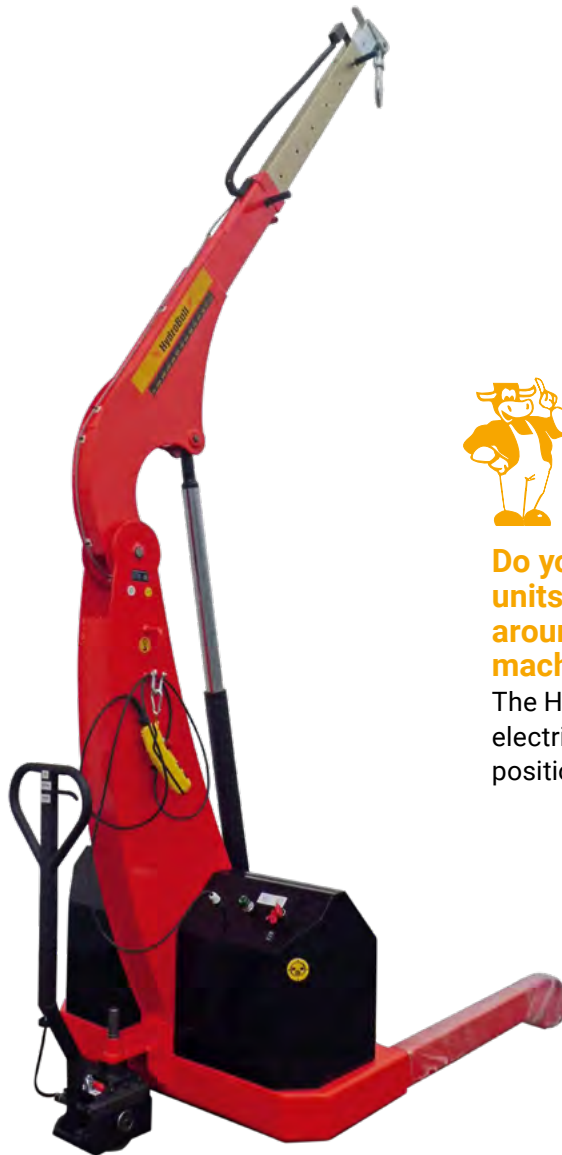


HB2000B20FaPo




Do you have several lifting units and need to move around pallets or underneath machines?


The HB2000B20 can help with electric lifting and FaPo for exact positioning!

At a glance

LIFTING		DRIVING		OPERATING FREQUENCY	
manual	✗	manual	✓	up to 10 times per month	✗
Compact hydraulic system	✗	Steering handle	✗	up to 25 times per month	✗
Hydrobull pump	✗	FaPo	✓	up to 100 times per month	✗
electric	✓	electric	✗	more than 100 times per month*	✓

LIFTING CAPACITY WITH HORIZONTAL JIB		
	max. 2000 kg in front of the wheels	✓
	440 kg at 1730 mm in front of the wheels	✓

Link to www.hydrobull.de

Here, you can find more information incl. videos, photos etc. 

* Please note the manual movement with FaPo! For longer distances we recommend the electric drive (RP)

This original Elektrobull crane with parallel chassis can handle pallets and drive around or under machines. The battery electric lift with cable remote control allows the operator to lift or lower the load from any point on the crane. The crane is also equipped with a driving positioning device (FaPo) developed by Hydrobull for driving support.

🔸 LIFTING/LOWERING



Secured on the high-quality, galvanized DIN safety hook **battery-powered at the push of a button on the manual switch**. Using the manual switch with approx. 3 metres of cable, the operator can flexibly operate the lifting and lowering independently of the crane. This means that you can stand close to the load to observe or assist the exact fitting. This gives more security and allows tasks to be completed faster.

🔸 DRIVING



Manually supported by the Hydrobull mechanical **driving positioning device, FaPo®** for short. A single person can easily manoeuvre and operate the machine with or without a load. The steering handle has a turning angle of almost 180 degrees which allows the crane to be turned almost on its front wheels, resulting in a small turning circle. The detailed description can be found in our **Technical Information Sheet 1**.

🔸 JIB

Has 13 setting which can be easily selected via 2two separate galvanized jibs using a socket pin system. In addition, the jibs are secured with a squeeze-out lock to prevent accidents.

🔸 PARKING

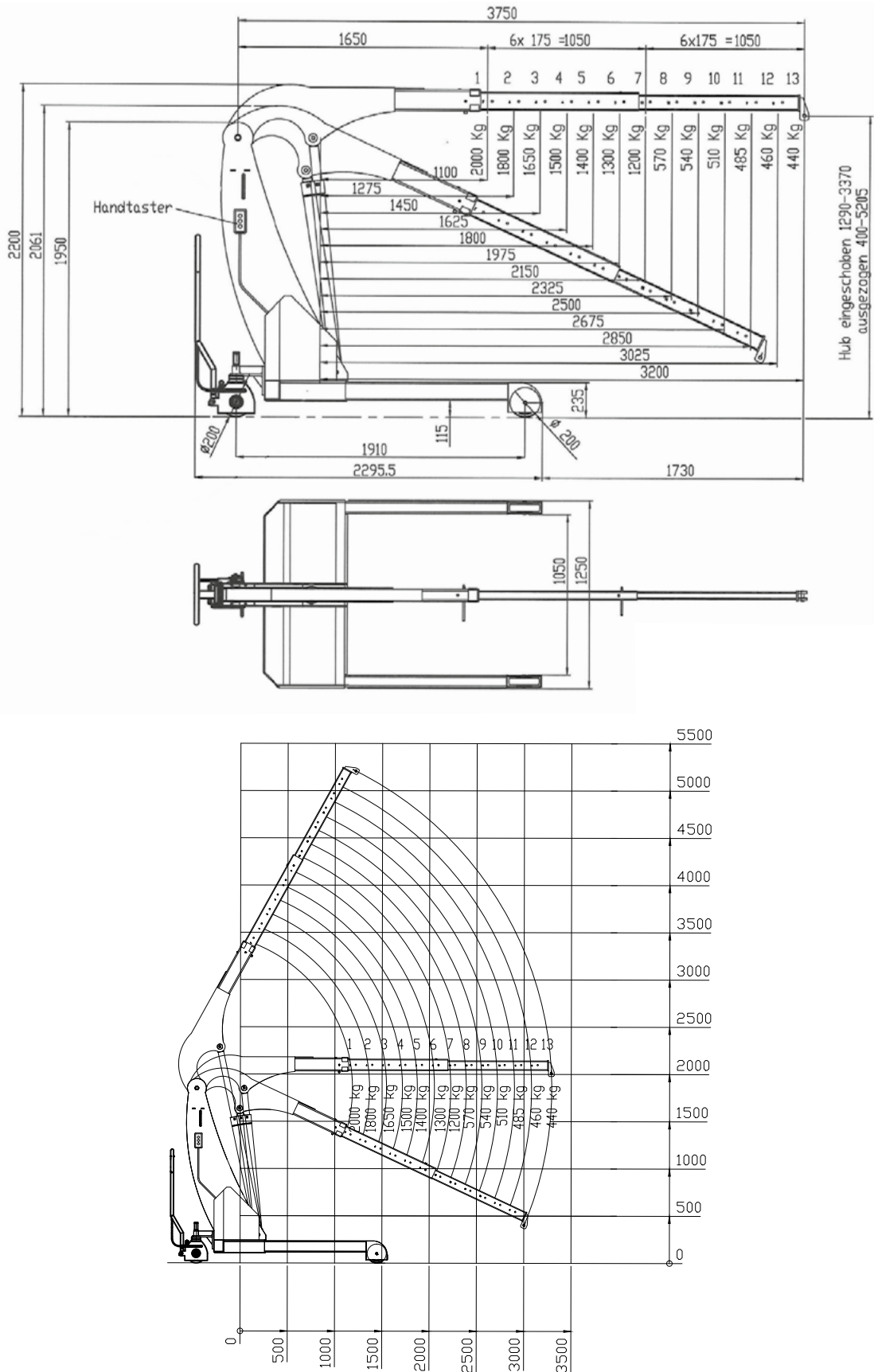
The machine is easily and conveniently locked in place by turning a lever on the FaPo steering wheel. Manual machines are generally not equipped with a travel brake.

🔸 OTHER

- Modern, protected design – only from Hydrobull
- Delivery incl. inspection book and operating instructions
- German Product
- Euronorm 2006/42/EC and DGUV68
- **2 Year Warranty**

Want to learn more about the benefits of our electric cranes? Our **Technical Information Sheet 2** contains more information.

Technical Drawings



Subject to technical modifications. Data subject to manufacturing tolerances.

Technical specifications

RATIO LIFTING CAPACITY, OUTREACH, LIFTING HEIGHT

Jib Position	Lifting capacity/kg	Load with horizontal jib/mm		Lift height*/mm	
		in front of the hydraulic system approx.	in front of the wheels approx.	min.	max.
1	2000	1150	0	970	3040
2	1800	1325	0	895	3180
3	1650	1500	0	820	3320
4	1500	1675	185	745	3460
5	1400	1850	360	670	3600
6	1300	2025	535	595	3750
7	1200	2200	710	520	3900
8	570	2375	885	445	4050
9	540	2550	1060	370	4200
10	510	2725	1235	295	4350
11	485	2900	1410	220	4490
12	460	3075	1885	145	4630
13	440	3250	1730	70	4770

* at hook mouth opening - please refer to the diagram for the reduced outreach

OTHER DETAILS

		min.	max.
Jib length from... to...		1680	3750
Length of wheelbase	mm		1910
Length of chassis incl. wheels	mm		2295
Length incl. inserted lowered jib Pos. 1	mm		2295
approx. aisle width for 90° turn	mm		2720
Width of chassis external	mm		1250
Width of chassis internal	mm		1060
Clearance height, jib horizontal	mm		2200
Clearance height, jib lowered	mm		2061
Clearance	mm		250
Hook length approx.	mm		330
Ground clearance	mm	120	130
Load wheel	mm		200
Steering wheel	mm		200
Slewing			-
Tare weight - for counterweight cranes incl. empty box	kg		950
Required filling weight for counterweight cranes**	kg		-
Batteries	Ah		2 x 95
Charger - external	A		20

** Machine can only be used when installed



Not the right machine? No problem!

Fill out our form on www.hydrobull.de and we will happily produce a custom transport solution for you.