

HB1000B17FaPo




Do you have several lifting units and need to move around pallets or underneath machines?

The HB1000B17 can help with electric lifting and FaPo for exact positioning!


At a glance

LIFTING		DRIVING		OPERATING FREQUENCY	
manual	✗	manual	✓	up to 10 times per month	✗
Compact hydraulic system	✗	Steering handle	✗	up to 25 times per month	✗
Hydrobull pump	✗	FaPo	✓	up to 100 times per month	✗
electric	✓	electric	✗	more than 100 times per month*	✓

LIFTING CAPACITY WITH HORIZONTAL JIB		
	max. 1000 kg in front of the wheels	✓
	185 kg at 1480 mm in front of the wheels	✓

Link to www.hydrobull.de

Here, you can find more information incl. videos, photos etc.



* Please note the manual movement with FaPo! For longer distances we recommend the electric drive (RP)

This original Elektrobull crane with parallel chassis can handle pallets and drive around or under machines. The battery electric lift with cable remote control allows the operator to lift or lower the load from any point on the crane. The crane is also equipped with a driving positioning device (FaPo) developed by Hydrobull for driving support.

🔧 LIFTING/LOWERING



Secured on the high-quality, galvanized DIN safety hook **battery-powered at the push of a button on the manual switch**. Using the manual switch with approx. 3 metres of cable, the operator can flexibly operate the lifting and lowering independently of the crane. This means that you can stand close to the load to observe or assist the exact fitting. This gives more security and allows tasks to be completed faster.

🔧 DRIVING



Manually supported by the Hydrobull mechanical **driving positioning device, FaPo®** for short. A single person can easily manoeuvre and operate the machine with or without a load. The steering handle has a turning angle of almost 180 degrees which allows the crane to be turned almost on its front wheels, resulting in a small turning circle. The detailed description can be found in our **Technical Information Sheet 1**.

🔧 JIB

Has 13 setting which can be easily selected via 2two separate galvanized jibs using a socket pin system. In addition, the jibs are secured with a squeeze-out lock to prevent accidents.

🔧 PARKING

The machine is easily and conveniently locked in place by turning a lever on the FaPo steering wheel. Manual machines are generally not equipped with a travel brake.

🔧 OTHER

- Modern, protected design – only from Hydrobull
- Delivery incl. inspection book and operating instructions
- German Product
- Euronorm 2006/42/EC and DGUV68
- **2 Year Warranty**

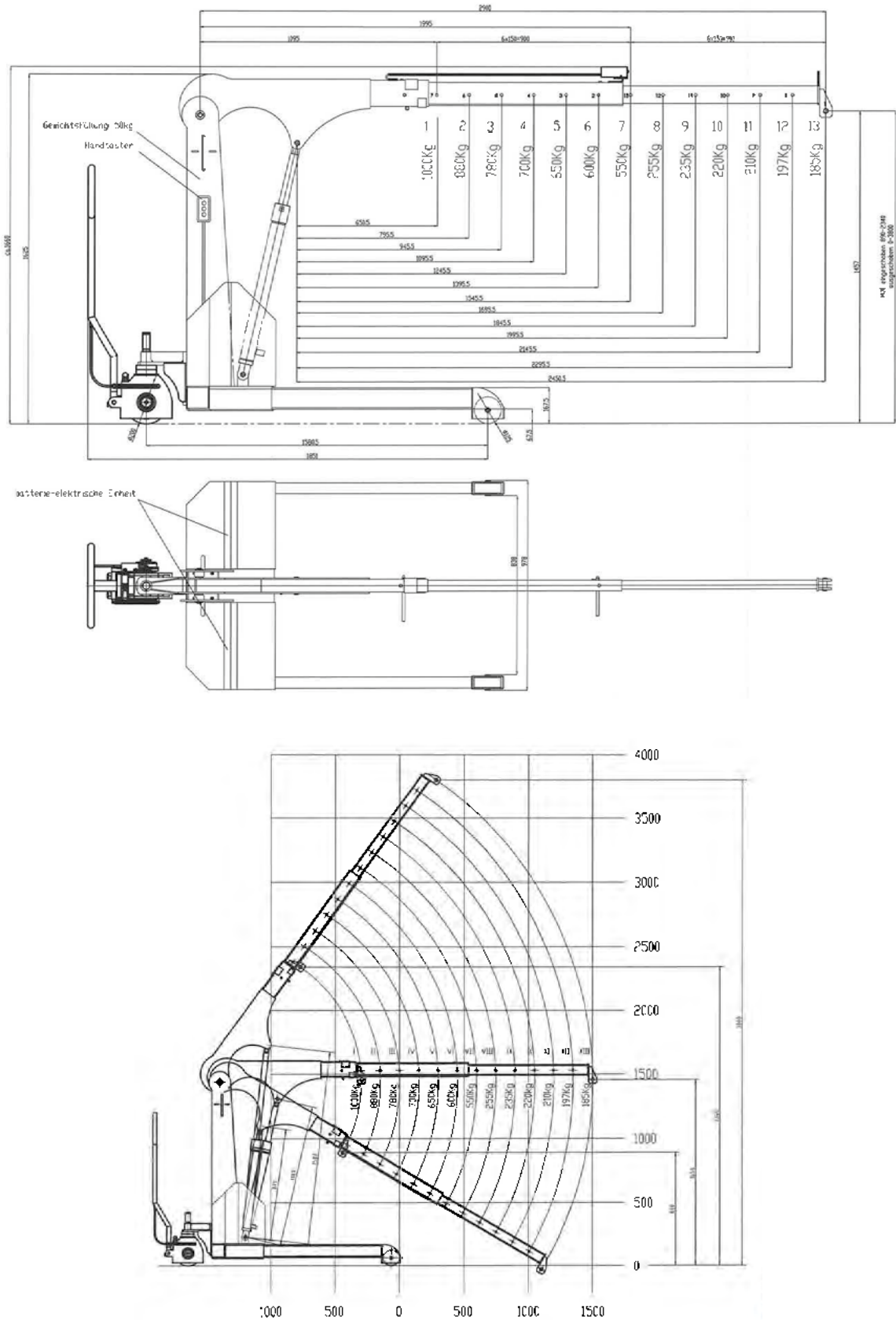
Want to learn more about the benefits of our electric cranes? Our **Technical Information Sheet 2** contains more information.

ELECTRIC CRANES

with parallel chassis

HB1000B17FaPo

Technical Drawings



Subject to technical modifications. Data subject to manufacturing tolerances.

Technical specifications

RATIO LIFTING CAPACITY, OUTREACH, LIFTING HEIGHT					
Jib	Lifting capacity/kg	Load with horizontal jib/mm		Lift height*/mm	
Position		in front of the hydraulic system approx.	in front of the wheels approx.	min.	max.
1	1000	650	–	690	2130
2	880	795	–	615	2250
3	780	945	–	540	2370
4	700	1095	60	465	2490
5	650	1245	280	390	2610
6	600	1395	430	310	2730
7	550	1545	580	230	2860
8	255	1695	730	150	2990
9	235	1845	880	70	3110
10	220	1995	1030	0	3230
11	210	2145	1180	0	3350
12	197	2295	1330	0	3470
13	185	2450	1480	0	3590

* at hook mouth opening - please refer to the diagram for the reduced outreach

OTHER DETAILS		min.	max.
Jib length from... to...		1095	2900
Length of wheelbase	mm		1580
Length of chassis incl. wheels	mm		1950
Length incl. inserted lowered jib Pos. 1	mm		1950
approx. aisle width for 90° turn	mm		2230
Width of chassis external	mm		980
Width of chassis internal	mm		835
Clearance height, jib horizontal	mm		1620
Clearance height, jib lowered	mm		1600
Clearance	mm		170
Hook length approx.	mm		265
Ground clearance	mm		30
Load wheel	mm		125
Steering wheel	mm		200
Slewing			–
Tare weight - for counterweight cranes incl. empty box	kg		500
Required filling weight for counterweight cranes**	kg		–
Batteries	Ah		95
Charger - external	A		10

** Machine can only be used when installed



Not the right machine? No problem!

Fill out our form on www.hydrobull.de and we will happily produce a custom transport solution for you.