

# HB2000FaPo



**Do you need large lifting heights?**

Industrial crane with parallel chassis for moving pallets.

## At a glance

LIFTING	
manual	✓
Compact hydraulic system	✗
Hydrobull pump	✓
electric	✗


DRIVING	
manual	✓
Steering handle	✗
FaPo	✓
electric	✗

OPERATING FREQUENCY	
up to 10 times per month	✗
up to 25 times per month	✗
up to 100 times per month	✓
more than 100 times per month	✗

LIFTING CAPACITY WITH HORIZONTAL JIB		
	max. 2000 kg inside the chassis	✓
	155 kg at 1730 mm in front of the wheels	✓

Link to [www.hydrobull.de](http://www.hydrobull.de)

Here, you can find more information incl. videos, photos etc.



These original Hydrobull cranes in industrial design have a parallel chassis and can therefore move loads. With 13 jib positions, they offer exceptionally long outreach and lifting capacity. With this special shape, the high load capacities are held within the chassis - smaller loads can even be carried in front of the wheels. No other crane can match the enormous outreach capacity and lift height. That is why they are often used for maintenance work under ceilings or above machinery. The industrial crane was designed to provide a long service life even with frequent use. Even today, we are still being asked to supply spare parts for equipment that was supplied 30–40 years ago.

### ✦ LIFTING



Secured to high-quality galvanised DIN-standard swivel hook with a **Hydrobull® precision pump with 4 power/lift settings**. More pumping power results in greater lift height. With smaller lifting distances and reduced effort, you can also lift heavy weights manually. The pump lever is horizontal, so that the force is transferred directly to the pump. Force is applied to the lever from above and a clip-on extension piece is supplied to achieve even greater leverage. The extension piece can be stored on the machine when not in use. Your safety is of course ensured. The power unit is equipped with an automatically closing retaining spring. If you release the T-handle, it closes automatically and prevents dangerous uncontrolled lowering of the jib arm. The maximum position is protected against overloading.

### ✦ LOWERING

Lowering is done via the T-handle; depending on the adjustment of the opening, the load is lowered millimetre by millimetre, either proportionally faster or slower. The load can be stopped at any point.

### ✦ JIB

Has 13 setting which can be easily selected via 2 two separate galvanized jibs using a socket pin system.

### ✦ Driving



Manually supported by the Hydrobull mechanical **driving positioning device, FaPo®** for short. A single person can easily manoeuvre and operate the machine **with** or without a load. The steering handle has a turning angle of almost 180 degrees which allows the crane to be turned almost on its front wheels, resulting in a small turning circle.

### ✦ PARKING

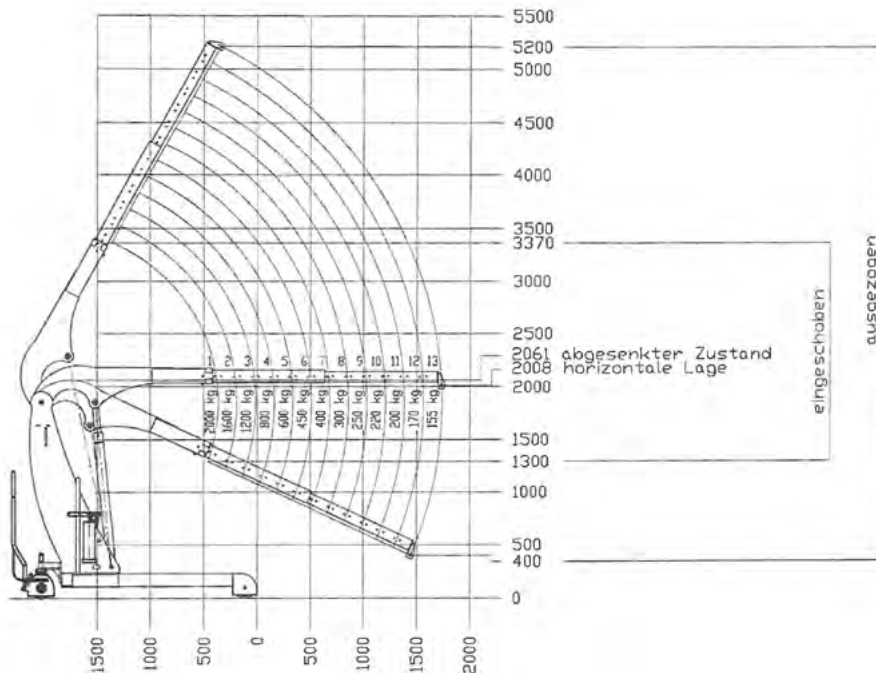
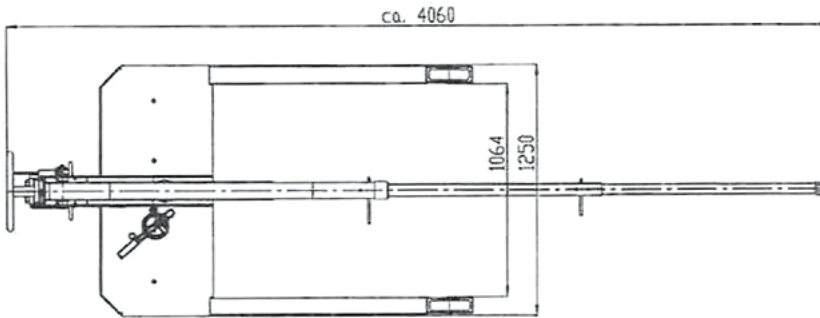
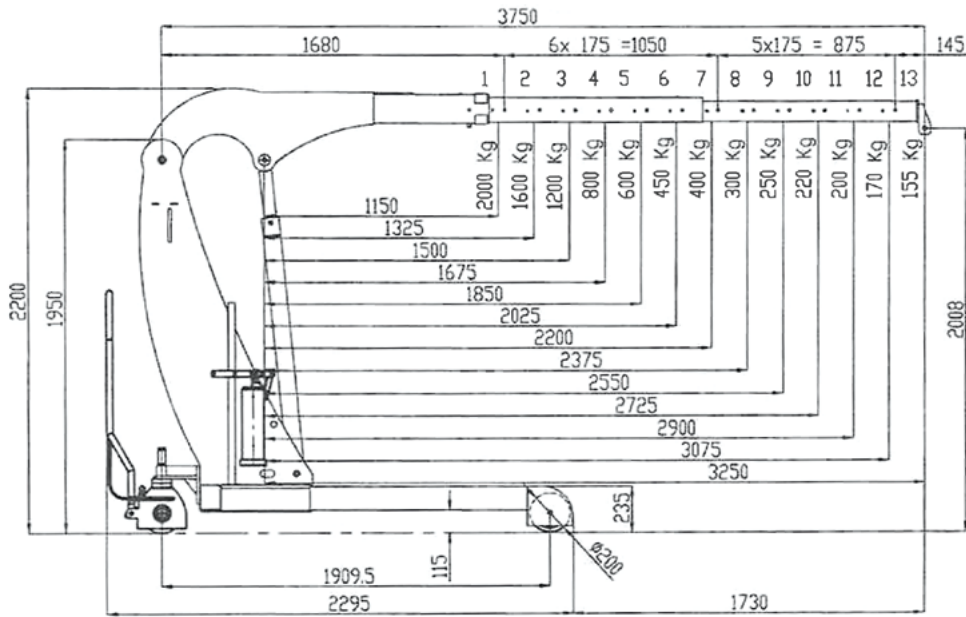
Is done easily and conveniently by turning a lever mounted on the guard of the FaPo steering wheel. **Manual machines are generally** not equipped with a travel brake.

### ✦ OTHER

- Seal kits and other spare parts are available ex stock for both the cylinder and the pump
- Foot protection on all wheels
- Modern, protected design – only from Hydrobull
- Delivered ready for use, including inspection log book and operating instructions
- German Product
- Produced on the basis of EC Machinery Directive 2006/42/EC
- UVV Check according to DGUV68
- **2 Year Warranty**

In addition, the jibs are secured with a squeeze-out lock to prevent accidents due to unintentional falling out.

### Technical Drawings



Subject to technical modifications. Data subject to manufacturing tolerances.

## Technical specifications

### RATIO LIFTING CAPACITY, OUTREACH, LIFTING HEIGHT

Jib Position	Lifting capacity/kg	Load with horizontal jib/mm		Lift height*/mm	
		in front of the hydraulic system	in front of the wheels	min.	max.
1	2000	1150	0	970	3040
2	1600	1325	0	895	3180
3	1200	1500	0	820	3320
4	800	1675	185	745	3460
5	600	1850	360	670	3600
6	450	2025	535	595	3750
7	400	2200	710	520	3900
8	300	2375	885	445	4050
9	250	2550	1060	370	4200
10	220	2725	1235	295	4350
11	200	2900	1410	220	4490
12	170	3075	1585	145	4630
13	155	3250	1730	70	4770

\* at hook mouth opening - please refer to the diagram for the reduced outreach

OTHER DETAILS		min.	max.
Jib length from... to...		1680	3750
Length of wheelbase	mm		1910
Length of chassis incl. wheels	mm		2295
Length incl. inserted lowered jib Pos. 1	mm		2295
approx. aisle width for 90° turn	mm		2720
Width of chassis external	mm		1250
Width of chassis internal	mm		1060
Clearance height, jib horizontal	mm		2200
Clearance height, jib lowered	mm		2061
Clearance	mm		250
Hook length approx.	mm		330
Ground clearance	mm	120	130
Load wheel	mm		200
Steering wheel	mm		200
Slewing			-
Tare weight - for counterweight cranes incl. empty box	kg		590
Required filling weight for counterweight cranes**	kg		-
Batteries			-

\*\* Machine can only be used when installed



**Not the right machine? No problem!**

Fill out our form on [www.hydrobull.de](http://www.hydrobull.de) and we will happily produce a custom transport solution for you.