

HB1000GKBRP



Do you work frequently?


Think about productivity and the health of your employees and take advantage of the benefits of electric lifting and travel drives.

At a glance

LIFTING	
manual	✗
Compact hydraulic system	✗
Hydrobull pump	✗
electric	✓


DRIVING	
manual	✗
Steering handle	✗
FaPo	✗
electric	✓

OPERATING FREQUENCY	
up to 10 times per month	✗
up to 25 times per month	✗
up to 100 times per month	✗
more than 100 times per month	✓

LIFTING CAPACITY WITH HORIZONTAL JIB		
	max. 1000 kg in front of the wheels	✓
	185 kg at 2530 mm in front of the wheels	✓

Link to www.hydrobull.de

Here, you can find more information incl. videos, photos etc.



ELECTRIC CRANES

with counterweight

HB1000GKBRP

These original Elektrobull counterweight cranes with rear-mounted chassis and counterweight box can directly approach loads and machines. The battery electric lift with cable remote control allows the operator to lift or lower the load from any point on the crane. In addition, the Elektrobull is equipped with a battery electric drive. One person alone can comfortably move the machine even over longer distances.

🔸 LIFTING/LOWERING

Secured to a high-quality galvanised DIN safety swivel hook **electrically with the push of a button on the manual switch** or with the steering handle.

🔸 Driving

Sensitive adjustment with 1.2 KW **electric drive** with all necessary safety features.

🔸 JIB

Has 13 setting which can be easily selected via 2two separate galvanized jibs using a socket pin system.
In addition, the jibs are secured with a squeeze-out lock to prevent accidents due to unintentional falling out.

🔸 BRAKING

By releasing the steering handle or vertical or horizontal positions, the machine brakes automatically.
After the work is done, the machine can be parked safely by removing the key.

🔸 COUNTERWEIGHT

ATTENTION!

Only use with filled box!
You can fill the box with steel plates yourself.



The empty counterweight box is supplied fitted on the crane and is removable.

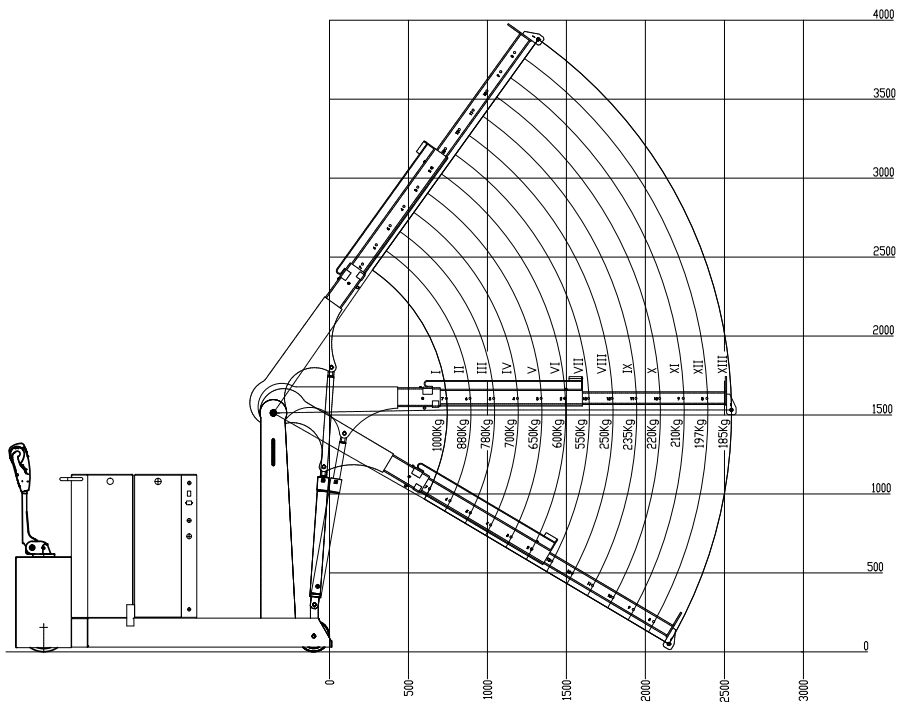
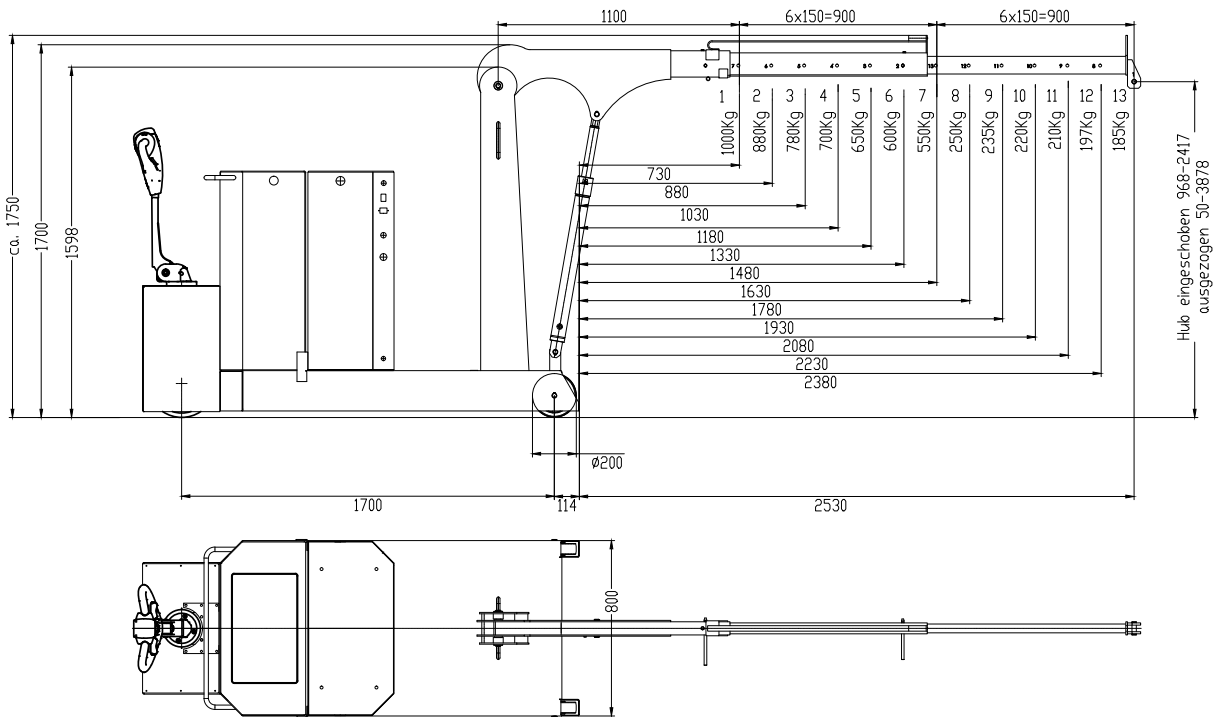
On the right and left side are openings for attaching suitable lifting aids. After filling, these openings can be closed with the plastic caps supplied, so that no weight is lost. The counterweight box also has a lid for closing. The lid has a device that allows you to lock it with a customer-supplied padlock.
On request, we can fill the counterweight box for an additional charge. It is delivered as a separate package on a pallet and must be placed on the crane by you using suitable lifting equipment.

🔸 OTHER

- Modern, protected design – only from Hydrobull
- Delivery incl. inspection book and operating instructions
- German Product
- Euronorm 2006/42/EC and DGUV68
- **2 Year Warranty**

If you are interested in discovering further advantages and more detailed descriptions of the electric cranes, please refer to our Technical Information Sheet 2.

Technical Drawings



Subject to technical modifications. Data subject to manufacturing tolerances.

Technical specifications

RATIO LIFTING CAPACITY, OUTREACH, LIFTING HEIGHT

Jib Position	Lifting capacity/kg	Load with horizontal jib/mm		Lift height*/mm	
		in front of the hydraulic system approx.	in front of the wheels approx.	min.	max.
1	1000	630	730	760	2210
2	880	780	880	680	2325
3	780	930	1030	600	2440
4	700	1080	1180	520	2560
5	650	1230	1330	440	2680
6	600	1380	1480	360	2800
7	550	1530	1630	280	2920
8	250	1680	1780	200	3040
9	235	1830	1930	120	3160
10	220	1980	2080	40	3280
11	210	2130	2230		3400
12	197	2280	2380		3520
13	185	2430	2530		3640

* at hook mouth opening - please refer to the diagram for the reduced outreach

OTHER DETAILS

		min.	max.
Jib length from... to...		1100	2900
Length of wheelbase	mm		1700
Length of chassis incl. wheels	mm		1880
Length incl. inserted lowered jib Pos. 1	mm		2550
approx. aisle width for 90° turn	mm		2600
Width of chassis external	mm		800
Width of chassis internal	mm		-
Clearance height, jib horizontal	mm		1800
Clearance height, jib lowered	mm		1670
Clearance	mm		-
Hook length approx.	mm		265
Ground clearance	mm		30
Load wheel	mm		200
Steering wheel	mm		230
Slewing			-
Tare weight - for counterweight cranes incl. empty box	kg		530
Required filling weight for counterweight cranes**	kg		1000
Batteries	Ah		4 x 80
Charger - inbuilt	A		30

** Machine can only be used when installed



Not the right machine? No problem!

Fill out our form on www.hydrobull.de and we will happily produce a custom transport solution for you.