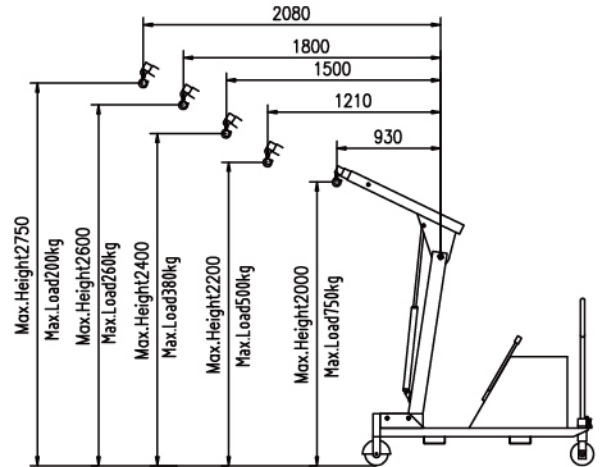


# Counter-Balanced Shop Crane LH series

- ▲ Counter balanced shop crane.
- ▲ Unique operate handle,brake design,mobile and foldable.
- ▲ With double action hydraulic pump ,fast and easy.
- ▲ Allows to work close to a machine.
- ▲ Tested 25% overload before delivery.



## Manual:



LH075J

## Electric:



EH075J



i-lift No.		2342101	2342102	2342103	2342104
Model		LH055J	LH075J	EH055J	EH075J
Capacity	kg(lbs)	550(1210)	750(1650)	550(1210)	750(1650)
Max load at jib length 925	kg(lbs)	550(1210)	750(1650)	550(1210)	750(1650)
Max load at jib length 1210	kg(lbs)	450(990)	500(1100)	450(990)	500(1100)
Max load at jib length 1500	kg(lbs)	350(770)	380(836)	350(770)	380(836)
Max load at jib length 1800	kg(lbs)	250(550)	260(572)	250(550)	260(572)
Max load at jib length 2080	kg(lbs)	150(330)	200(440)	150(330)	200(440)
Hydraulic Pump		Double acting		Electric	
Wheel	mm(inch)	Steel+PU Φ180(7)			
Max crane arm length	mm(inch)	2080(81.9)			
Min crane arm length	mm(inch)	930(36.6)			
Lifting height max cantilever arm extended	mm(inch)	2750(108.3)			
Overall Size LxWxH	mm(inch)	2400x910x1630(94.5x35.8x64.2)			
Packing Size LxWxH (2pcs)	mm(inch)	2400x1900x1700(94.5x74.8x66.9)			
Battery	V/Ah	-	-	12/60	12/80
Charger	V/A	-	-	12/8	
Weight (without counterweight & box)	kg(lbs)	180(396)		215(473)	220(484)
Weight of counterweight box	kg(lbs)	210+30(462+66)	280+40(616+88)	210+30(462+66)	280+40(616+88)
Total Weight (with counterweight & box)	kg(lbs)	420(924)	500(1100)	455(1000)	540(1188)

# Full Electric Hydraulic Lifting Crane FEC450

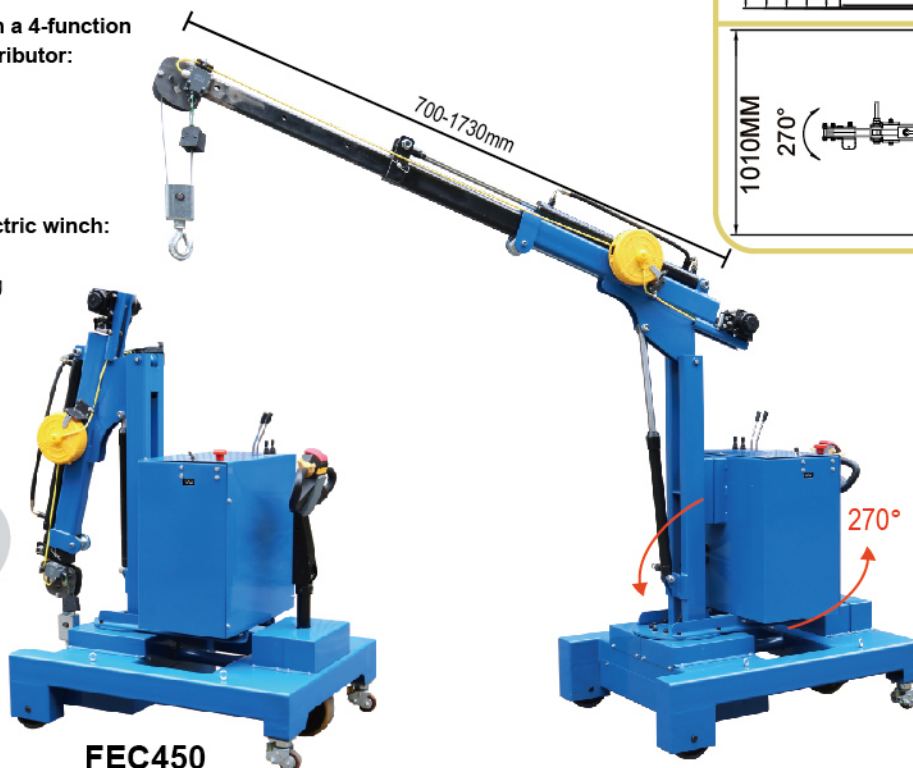
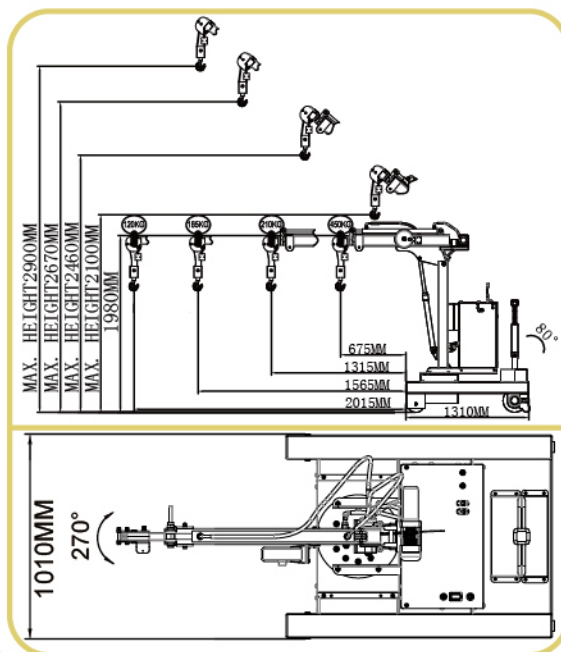
- ▲ FEC450 is a heavy-duty counterbalanced powered drive workshop crane (built-in ballast weights), with a 270° pivoting arm, suitable for lifting loads up to 450 kg in line with safety international standards.
- ▲ Equipped electric winch for lifting and lowering.
- ▲ Electric Drive Wheel.
- ▲ In case of fragile loads or awkward placements, lowering speed can be reduced through a knob.
- ▲ Lifting system is fitted with a security valve that prevents overloading and eliminates the risk of machine overturning in every position of its 270° rotation.

### Equipped with a 4-function hydraulic distributor:

- ▲ jib lifting
- ▲ jib lowering
- ▲ jib extension
- ▲ jib retraction

### Equipped electric winch:

- ▲ goods lift
- ▲ goods lowering



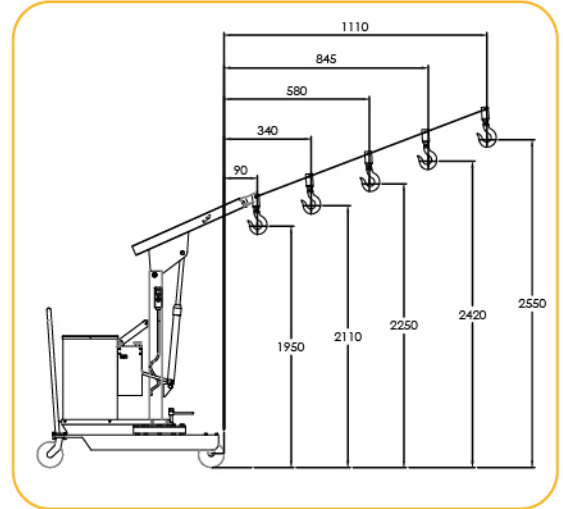
**Electric Power**

**FEC450**

i-Lift No.	2340301					
Model	FEC450					
Hoist lifting method	Electric Lifting					
Max. load per gear	kg(lb.)	450(990)	210(462)	185(407)	145(319)	120(264)
Max. hook height per gear	mm(in.)	1960(77.2)	2420(95.3)	2560(100)	2710(100.7)	2840(111.8)
Hook to front distance per gear when the hook highest	mm(in.)	700(27.6)	1160(45.7)	1350(53.1)	1570(61.8)	1730(68.1)
Hook height when the hoist arm in a horizontal state	mm(in.)	1340(52.8)				
Hook to front distance when the hoist arm in a horizontal state	mm(in.)	665(25.8)	1035(40.7)	1555(61.2)	1805(71)	2005(80)
Max. the hoist arm length per gear	mm(in.)	1070(42)	1710(67.3)	1960(77.2)	2210(87)	2410(94.9)
Body size: LxWxH	mm(in.)	1310x1010x1910(51.6x40x75.2)				
Max. rotation angle		270°				
Max. radius of rotaion	mm(in.)	2410(95)				
Min. radius of rotaion	mm(in.)	1070(42)				
Caster diameter (PU)	mm(in.)	Φ180(7)/Φ250(10)				
Driving wheel power		0.7kw				
Driving wheel size	mm(in.)	250x80(10x3.1)				
Battery	V/ah	12/80x2				
Charger	V/A	24/15				
Net Weight	kg(lb.)	1204(2648.8)				

# Hydraulic Lifting Crane HLC series

- ▲ HLC550E is a heavy-duty, extremely versatile counterbalanced workshop crane (built-in ballast weights), with a 360° pivoting arm, suitable for lifting loads up to 550 kg.
- ▲ Fitted with traction battery and battery charger.
- ▲ Equipped with a 4-function hydraulic distributor that allows for adjustable and smooth jib lifting, lowering, extension and retraction.
- ▲ In case of fragile loads or awkward placements, lowering speed can be reduced through a knob.
- ▲ Lifting system is fitted with a security valve that prevents overloading and eliminates the risk of machine overturning in every position of its 360° rotation.



**HLC550E**



**HLC550E**

i-Lift No.	2340201					2340202					
Model	HLC550					HLC550E					
Hoist lifting method	Manual hydraulic					Electric Lifting					
Max. load per gear	kg(lb.)	550(1210)	450(990)	350(770)	250(550)	150(330)	550(1210)	450(990)	350(770)	250(550)	150(330)
Max. hook height per gear	mm(in.)	1900(74.8)	2160(85)	2260(89)	2450(96.5)	2600(102.4)	1960(74.8)	2110(83)	2250(88.5)	2420(95.3)	2550(100.4)
Hook to front distance per gear when the hook highest	mm(in.)	115(4.5)	280(11)	570(22.4)	790(31.1)	1002(40)	90(3.5)	340(13.4)	580(22.8)	845(33.3)	1110(43.7)
Hook height when the hoist arm in a horizontal state	mm(in.)	1540(60.6)					1540(60.6)				
Hook to front distance when the hoist arm in a horizontal state	mm(in.)	370(14.6)	660(26)	953(37.5)	1243(48.9)	1530(60.2)	370(14.6)	660(26)	953(37.5)	1243(48.9)	1530(60.2)
Body size: L×W×H	mm(in.)	1400x985x1600(55x38.8x63)					1400x985x1600(55x38.8x63)				
Caster diameter	mm(in)	Φ200(8)					Φ200(8)				
Net weight	kg(lb.)	612(1346.4)					662(1456.4)				
Battery	V/Ah	-					12/80				
Charger	V/A	-					12/8				