

IT1500N



Do you occasionally need a flexible assistant with a fast lift?


Then our modern, affordable IT1500N is right for you!

At a glance

LIFTING	
manual	✓
Compact hydraulic system	✓
Hydrobull pump	✗
electric	✗


DRIVING	
manual	✓
Steering handle	✓
FaPo	✗
electric	✗

OPERATING FREQUENCY	
up to 10 times per month	✗
up to 25 times per month	✓
up to 100 times per month	✗
more than 100 times per month	✗

LIFTING CAPACITY WITH HORIZONTAL JIB		
	max. 500 kg in front of the wheels	✓
	175 kg at 1700 mm in front of the wheels	✓

Link to www.hydrobull.de

Here, you can find more information incl. videos, photos etc.



The original Hydrobull crane with counterweight has a rear-mounted chassis and its special curved design hides the counterweight filling, which is installed on site. Thanks to the counterweight, the small crane is flexible and can be used immediately. This really cost-effective original Hydrobull crane is designed for occasional use. For more frequent use we recommend the Elektrobull or the industrial versions. The compact hydraulic system is designed for approx. 500 lifts.

🔸 LIFTING/LOWERING

Secured to a high-quality, galvanised DIN safety swivel hook with a double-acting compact hydraulic system with the largest lift of these low-cost machines.

With only 8-16 strokes you achieve 1 m lift.

The load is released sensitively by opening a handwheel. For your safety, a return stroke will automatically close the valve as soon as you release and prevent unintentional lowering of the load.

🔸 Driving

Manually by pulling and pushing on a steering handle that can be turned almost up to 180 degrees.

🔸 JIB

Has five settings, which can be easily selected by simply pulling out the telescopic jib with a socket pin system.

🔸 PARKING

By raising the steering handle, the crane is automatically locked for idle periods. Manual machines are generally not equipped with a travel brake.

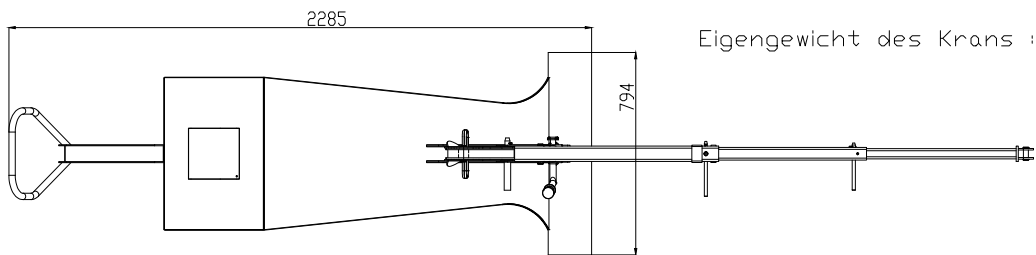
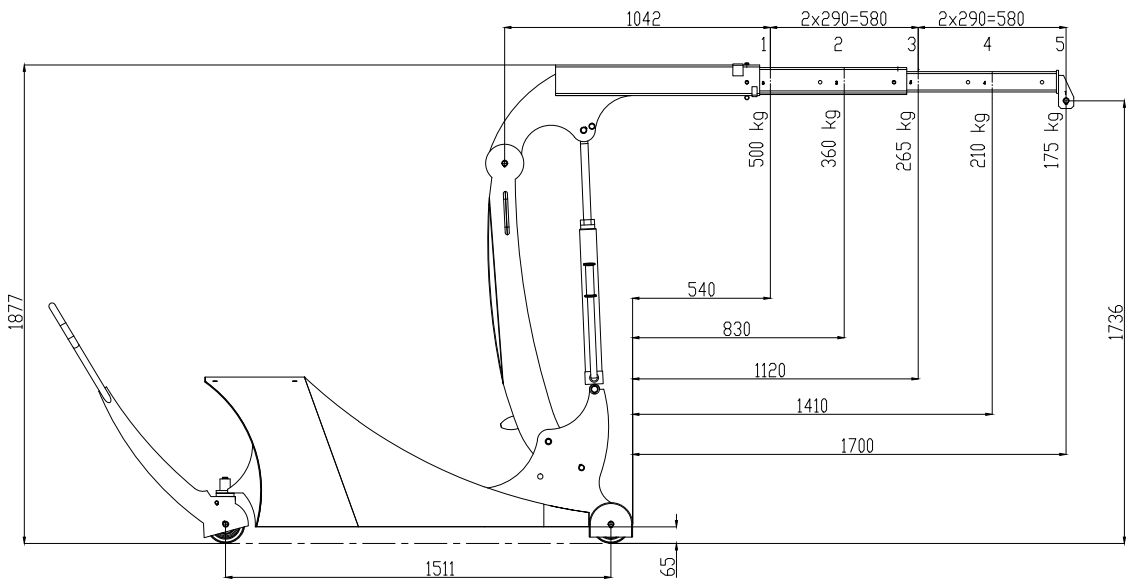
🔸 COUNTERWEIGHT

Is installed in the machine on-site and is included in the price. This serves to stabilise the crane and cannot be removed.

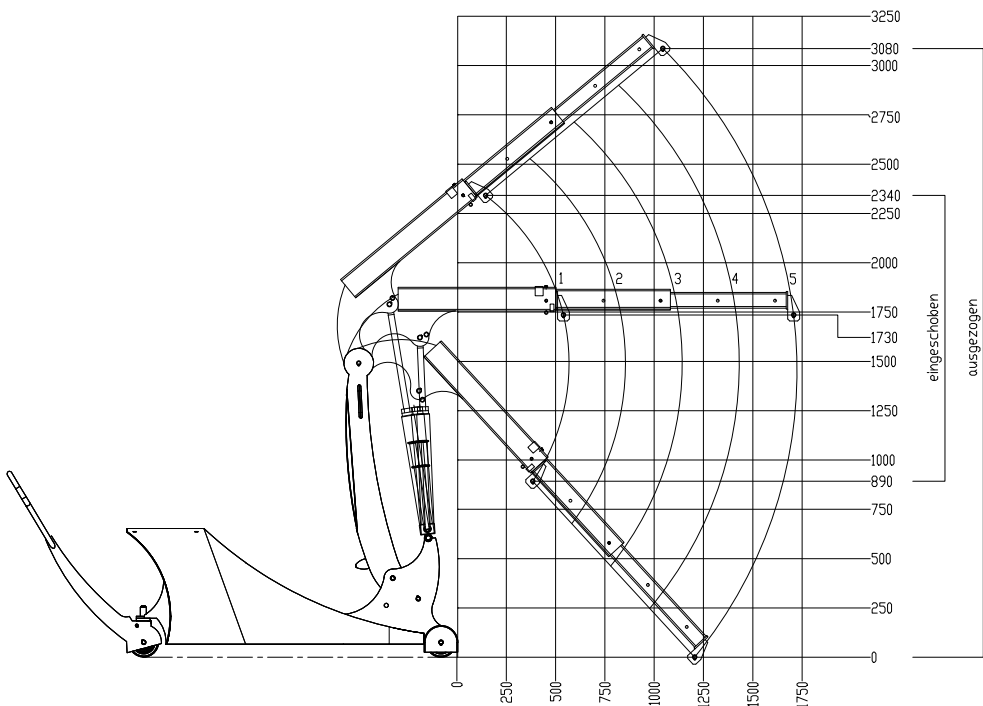
🔸 OTHER

- Modern, protected design – only from Hydrobull
- Delivery incl. declaration of conformity and operating instructions
- German Product
- Euronorm 2006/42/EC and DGUV68
- **2 Year Warranty**

Technical Drawings



Eigengewicht des Krans : 600 kg



Subject to technical modifications. Data subject to manufacturing tolerances.

Technical specifications

RATIO LIFTING CAPACITY, OUTREACH, LIFTING HEIGHT

Jib	Lifting capacity/kg	Load with horizontal jib/mm		Lift height*/mm	
		in front of the hydraulic system approx.	in front of the wheels approx.	min.	max.
1	500	700	540	620	2160
2	360	990	830	380	2345
3	265	1280	1120	140	2530
4	210	1570	1410	0	2715
5	175	1860	1700	0	2900

* at hook mouth opening - please refer to the diagram for the reduced outreach

OTHER DETAILS

		min.	max.
Jib length from... to...		1045	2205
Length of wheelbase	mm		1500
Length of chassis incl. wheels	mm		2300
Length incl. inserted lowered jib Pos. 1	mm		2170
approx. aisle width for 90° turn	mm		2200
Width of chassis external	mm		800
Width of chassis internal	mm		-
Clearance height, jib horizontal	mm		1875
Clearance height, jib lowered	mm		1600
Clearance	mm		-
Hook length approx.	mm		225
Ground clearance	mm		30
Load wheel	mm		150
Steering wheel	mm		150
Slewing			-
Tare weight - for counterweight cranes incl. empty box	kg		600
Required filling weight for counterweight cranes**	kg		-
Batteries			
Inbuilt charger			

** Machine can only be used when installed



Not the right machine? No problem!

Fill out our form on www.hydrobull.de and we will happily produce a custom transport solution for you.