

Part-No. Description

50419	Inflation hose with quick couplings, 3 m
-------	--

50418	Inflation hose with nipples, 5 m
-------	----------------------------------

50417	Inflation hose with nipples, 10 m
-------	-----------------------------------

50725	Safety and control gauge 0,5 bar-V 0,5
-------	---

50734	Safety and control gauge 0,6 bar-V 0,6
-------	---

50233	Safety and control gauge 0,7 bar-V 0,7
-------	---

50171	Safety and control gauge 1 bar-V 1
-------	---------------------------------------

50105	Safety and control gauge 1,5 bar-V 1,5
-------	---

50172	Safety and control gauge 2,5 bar-V 2,5
-------	---

50728	Safety and control gauge 6 bar-V 6
-------	---------------------------------------

50744	Safety and control gauge 12 bar-V 12
-------	---

2005	Pressure reducer 200/8 bar
------	----------------------------

2066	Pressure reducer 300/8 bar
------	----------------------------

50152	Cylinder 7 l
-------	--------------

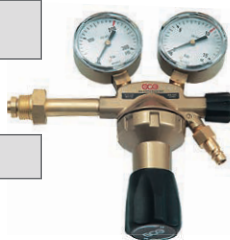
50151	Cylinder 5 l
-------	--------------

2036	Adapter for tireventil
------	------------------------

2047	Quick coupling for tireventil
------	-------------------------------

2046	Rope with snap hook, 5 m
------	--------------------------

2113	Rope with snap hooks, 10 m
------	----------------------------



Part-No. Description

2150	Poly-Lift inflation hose with nipples, 5 m
------	---

2151	Poly-Lift inflation hose with nipples, 10 m
------	--

2152	Poly-Lift inflation hose with nipples, 15 m
------	--

2155	Poly-Lift inflation hose with nipple and quick coupling, 5 m
------	---

2156	Poly-Lift inflation hose with nipple and quick coupling, 10 m
------	--

2157	Poly-Lift inflation hose with nipple and quick coupling, 15 m
------	--



2065	Adapter quick coupling-tire ventil
------	---------------------------------------



2010	Venting and meassuring hose, 6 m for PU 10/20
------	--



2009	Venting and meassuring hose, 6 m for PU 20/50, PU 50/80, PU 50/120
------	--



2060	Venting and meassuring hose, 6 m for PU 30/60 F, PU 50/100 F
------	---



2011	Stopcock with Storz D couplings
------	---------------------------------



2012	Stopcock with Storz C couplings
------	---------------------------------



2013	Stopcock with Storz B couplings
------	---------------------------------



2078	Stopcock with Storz A couplings
------	------------------------------------



Part-No. Description

2058 Manometer for the leak test with air 0–250 mbar with hose, 5 m

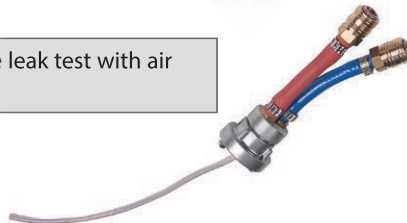


2086 Digital manometer for the leak test with air with hose, 5 m 0–2000 mbar

2128 Digital manometer for the leak test with air with hose, 5 m 0–200 mbar



2032 Adapter for the leak test with air N-D 25



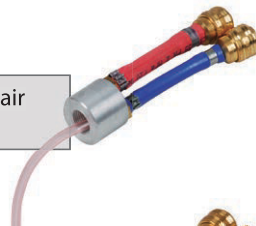
2035 Adapter for the leak test with air N-C 52



2073 Adapter for the leak test with air N-B 75



2064 Adapter for the leak test with air N-PUK 1/2"



2069 Adapter for the leak test with air N-PUK 1"



2138 Adapter for the leak test with air N-PUK 2"



Part-No. Description

50435 Hand pump



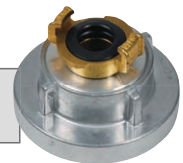
50103 Foot pump



2023 Reduction Storz D 25/GEKA-coupling



2061 Reduction Storz C 52/GEKA-coupling



2070 Reduction Storz B 75/GEKA-coupling



2025 Reduction GEKA/quick coupling



2088 Adapter for the leak test with water NV-C 52



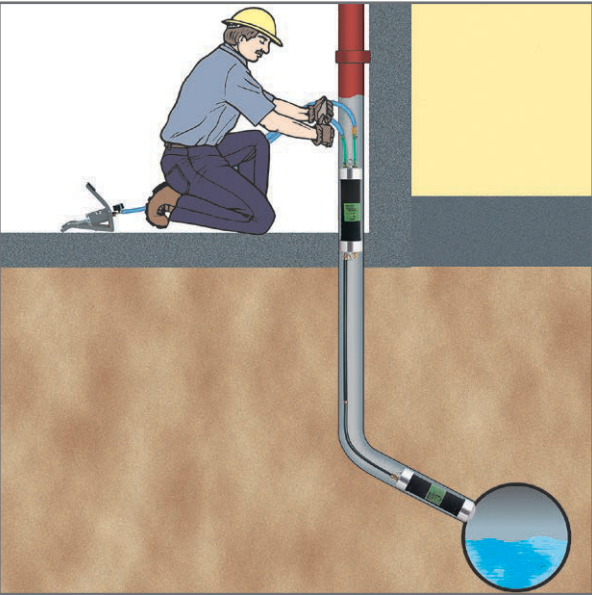
2087 Adapter for the leak test with water NV-B 75



TESTING SET FOR HOUSE CONNECTIONS DS 8/15



This set is used for DN 80 to 150 mm pipe leak tests using air as the testing medium. They can be used both in straight sections of the pipe and in section with round or sharp bends or knee pieces up to 90 degrees. The set consists of a digital pressure gauge and all the necessary fittings and accessories for carrying out leak tests according to DIN EN 1610.



2106	Reduction MINI/V-7,2/R	1 pc
------	------------------------	------



2085	Reduction MINI/R-7,2/V	1 pc
------	------------------------	------



Accessories and spare parts:

Part-No.	Description	
1502	Test pipe stopper HPU 8/15	1 pc



1505	Test pipe stopper HPU 8/15 W	1 pc
------	---------------------------------	------



1501	Pipe stopper HU 8/15	1 pc
------	----------------------	------



2089	Filling armature with manometer 0-4 bar	1 pc
------	--	------



2090	Test armature for the leak test with air	1 pc
------	--	------



2091	Digital manometer with hose, 1 m	1 pc
------	----------------------------------	------



2107	Sliding and filling rod, 2 m	4 pcs
2108	Sliding and filling rod, 1 m	1 pc
2109	Sliding and filling rod, 0,5 m	2 pcs



2095	Rope with snap hooks, 10 m	1 pc
------	----------------------------	------



50243	Portable case	1 pc
-------	---------------	------

TESTING SET FOR HOUSE CONNECTION DS 10/20

Accessories and spare parts:

Part-No. Description

1504	Test pipe stopper HPU 10/20	1 pc
------	--------------------------------	------



1503	Pipe stopper HU 10/20	1 pc
------	-----------------------	------



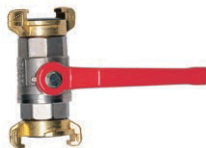
2089	Filling armature with manometer 0–4 bar	1 pc
------	--	------



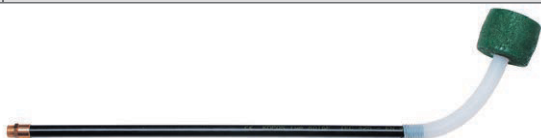
2101	Adapter for the leak test with air	1 pc
------	------------------------------------	------



2098	Stopcock G1" with GEKA couplings	1 pc
------	----------------------------------	------



2099	Float	1 pc
------	-------	------



2100	Safety armature 300 mbar for the leak test with air	1 pc
------	--	------



2107	Sliding and filling rod, 2 m	4 pcs
------	------------------------------	-------

2108	Sliding and filling rod, 1 m	1 pc
------	------------------------------	------

2109	Sliding and filling rod, 0,5 m	2 pcs
------	--------------------------------	-------



2105	Adapter for digital manometer	1 pc
------	-------------------------------	------



This set is used for DN 100 to 200 mm pipe leak tests using air or water as the testing medium. They can be used both in straight sections of the pipe and in section with round or sharp bends. The set consists of all the necessary fittings and accessories for carrying out leak tests according to DIN EN 1610.

2097	Venting and measuring hose with GEKA couplings, 5 m	1 pc
------	--	------



2095	Rope with snap hooks, 10 m	1 pc
------	----------------------------	------



2106	Reduction MINI/V–7,2/R	1 pc
------	------------------------	------



2085	Reduction MINI/R–7,2/V	1 pc
------	------------------------	------



50244	Portable case	1 pc
-------	---------------	------