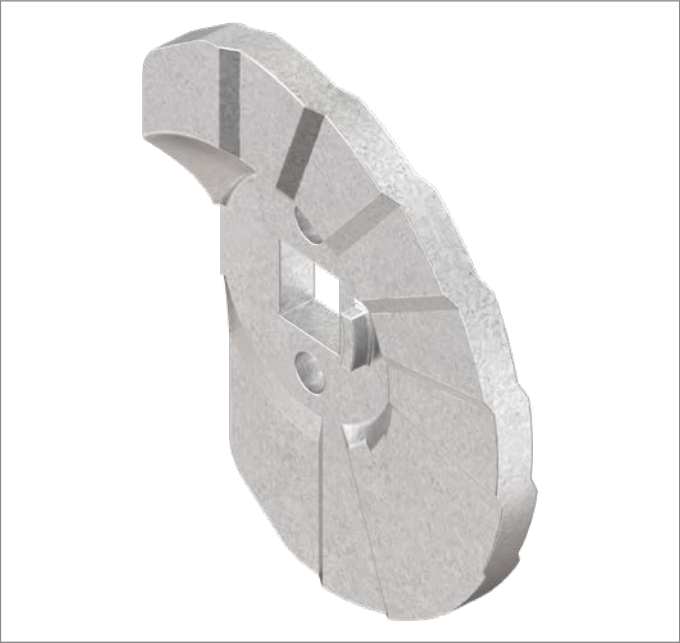
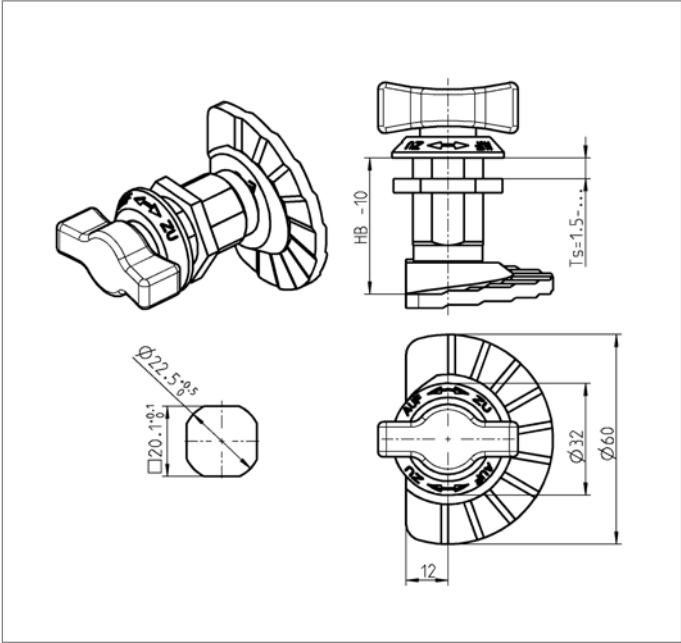


Product image



Drawing



Note	
GH 18 = HA 19 or = HB 27	GH 40 = HA 41 or = HB 49
GH 18 = HA 31 or = HB 39	GH 50 = HA 51 or = HB 59
GH 36 = HA 37 or = HB 45	

Properties	
Spoon	no
Short spoon	no
Spoon different from standard	no
Hooked cam	no
Compression value	10 mm
Slam cam	no
Cap dimension L	
Mounting position	Inside the sealing

Properties	
Number of possible locking points	1 point
Material	Zinc die
Dimension t in mm	4.0 mm
Surface	raw

The above information is given to the best of our knowledge. The tests are carried out under laboratory conditions and therefore have the character of a general recommendation. The suitability of our product for the respective application must, if necessary, be checked and verified by our own tests “under original conditions”.

1000-387

Stepped cam with catch, Zinc die raw; 1000-387

Drawing 2

