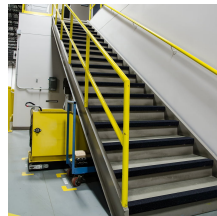
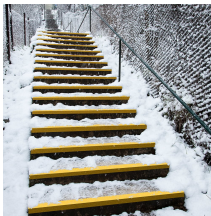
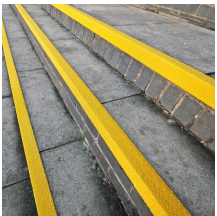
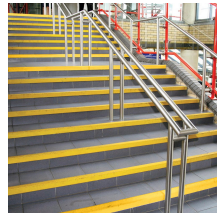
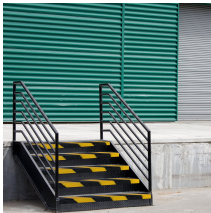


COBAGRiP® Stair Nosing

Increase stair safety with highly visible anti-slip stair nosing

- Durable and easy to install on both existing and new-build steps.
- A hard wearing, gritty surface available in bright colours helps protect against slips and trips whilst meeting the Equality Act requirements (DDA).
- Manufactured with chamfered back edge for additional safety.



Parts

Part Number	Size	Colour	Weight (kg)
GRP010001N	3 m x 55 mm x 55 mm	Black	1.8
GRP010002N	2 m x 55 mm x 55 mm	Black	1.2
GRP010003N	1.5 m x 55 mm x 55 mm	Black	0.9
GRP010004N	1 m x 55 mm x 55 mm	Black	0.6
GRP010005N	0.75 m x 55 mm x 55 mm	Black	0.45

Technical Specifications

Material	GRP
Product Height	5 mm
Min. Operating Temperature	-50°C
Max. Operating	+90°C

Part Number	Size	Colour	Weight (kg)
GRP010701N	3 m x 55 mm x 55 mm	Black/Yellow	1.8
GRP010702N	2 m x 55 mm x 55 mm	Black/Yellow	1.2
GRP010703N	1.5 m x 55 mm x 55 mm	Black/Yellow	0.9
GRP010704N	1 m x 55 mm x 55 mm	Black/Yellow	0.6
GRP010705N	0.75 m x 55 mm x 55 mm	Black/Yellow	0.45
GRP070001N	3 m x 55 mm x 55 mm	Yellow	1.8
GRP070002N	2 m x 55 mm x 55 mm	Yellow	1.2
GRP070003N	1.5 m x 55 mm x 55 mm	Yellow	0.9
GRP070004N	1 m x 55 mm x 55 mm	Yellow	0.6

Temperature	
Environmental Resistance	Suitable for indoor and outdoor environments
Typical Applications	External steps
Installation Method	Bond or screw to surface
Cleaning Method	COBAGRiP should be almost maintenance free in most outside environments. Natural elements will have the effect of cleaning COBAGRiP. Brushing and flushing with a mild detergent solution may be desirable now and again to restore appearance.
Fire Tested to	DIN 13501: Bfl - s1 (2018) & EN ISO 11925-2:2020 & EN ISO 9239-1:2010 (both 2021)
COO (Country of Origin)	CN
Slip Tested to	DIN 51130 - R13 & BS 7976-2 - low slip potential

Get in touch | To order FREE samples or arrange a site visit please call +44 (0)1788 228 555 or email sales@cobaeurope.com

www.cobaeurope.com