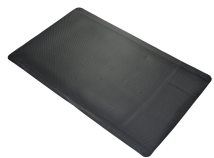
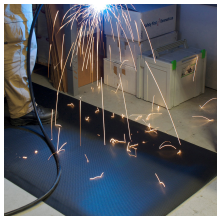
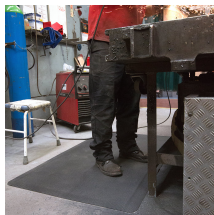
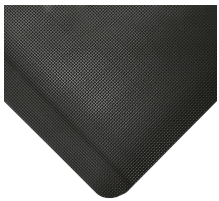


Diamond Tread

Fatigue relief for welding professionals



- Welders need relief from standing like any other professional.
- The heavy-duty top surface is both resilient and fire tested, whilst the soft foam underlayer provides cushioning for the feet.
- Ideal for welding bays and demanding industrial use.
- Flame retardant top surface (tested to BS EN 13501-1) – so weld sparks aren't an issue.
- Loose lay – can be moved easily.
- Bevelled edges help avoid creating a trip risk.



Parts

Part Number	Size	Colour	Weight (kg)
DTB010001	0.6 m x 0.9 m	Black	3.7
DTB010002	0.9 m x 1.5 m	Black	9.32
DTB010003	0.9 m x 18.3 m	Black	113
DTB010003C	0.9 m x per linear metre	Black	6.5

Technical Specifications

Material	Vinyl top surface with PVC foam backing (fusion bonded, not glued)
Surface Finish	Diamond pattern
Product Height	15 mm
Roll Length	18.3 m
Min.	0°C

Operating Temperature

Max. Operating Temperature +55°C

Environmental Resistance Suitable for dry indoor environments. Will withstand welding splatter and spillages of other hot materials.

Typical Applications Welding bays

Installation Method Loose lay

Cleaning Method Brush/mop the top surface

Fire Tested to BS EN 13501-1 Class Cf1 - s1

COO (Country of Origin) CN

Get in touch | To order FREE samples or arrange a site visit please call +44 (0)1788 228 555 or email sales@cobaeurope.com

www.cobaeurope.com