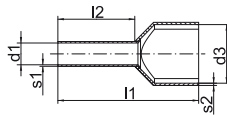


Insulated twin cable end-sleeves



- ▶ For fine and superfine stranded conductors, e.g. to DIN EN 60228 Cl. 5 and 6
- ▶ For looping of clamps
- ▶ Colour-coding following DIN 46228 part 4 (0.5 - 16 mm²)
- ▶ Halogen-free

Characteristics

- Heat resistant to 105° C

Material

- Copper (EN13600)
- Synthetic material: polypropylene

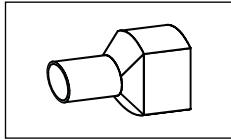
Surface

- Tin-plated to protect against corrosion

Technical instructions

- Tool: see page 150

Nominal cross section mm ²	Part No.	Colour	Dimension mm						Weight/ 1000 pcs. ~ kg	Packing unit/ pcs
			d1	d3	l1	l2	s1	s2		
2 x 0.25	8678		1.20	2.3/3.9	15.0	8	0.15	0.25	0.110	1000
2 x 0.34	8688		1.20	2.3/3.9	15.0	8	0.15	0.25	0.110	1000
2 x 0.5	8698		1.40	3.0/5.2	15.0	8	0.15	0.25	0.110	1000
2 x 0.75	8708		1.70	3.3/5.5	15.0	8	0.15	0.25	0.130	1000
	87010		1.70	3.3/5.5	17.0	10	0.15	0.25	0.150	1000
2 x 1	8718		2.00	4.0/6.0	15.0	8	0.15	0.30	0.170	1000
	87110		2.00	4.0/6.0	17.0	10	0.15	0.30	0.170	1000
2 x 1.5	8728		2.20	4.2/7.2	16.0	8	0.15	0.30	0.183	1000
	87212		2.20	4.2/7.2	20.0	12	0.15	0.30	0.237	1000
2 x 2.5	87310		2.80	4.8/8.4	18.5	10	0.20	0.30	0.312	100
	87313		2.80	4.8/8.4	21.5	13	0.20	0.30	0.340	100
2 x 4	87412		3.70	5.7/9.6	23.0	12	0.20	0.40	0.467	100
2 x 6	87514		4.80	7.7/10.8	26.0	14	0.20	0.40	0.730	100
2 x 10	87614		6.40	8.0/13.8	26.0	14	0.20	0.40	0.884	100
2 x 16	87714		8.20	10.4/19.2	30.0	14	0.20	0.40	1.273	100



Tool application chart

Insulated twin cable end-sleeves

Tool type	Crimping range corresponds to nominal cross-section mm ²	Crimping Tool		Catalogue page		Crimp profile
		Part No.	Crimping head / adapter	Crimping Tool	Crimping die	
Mechanical crimping tools	2 x 0,25 - 2 x 4	K3016K		216		
	2 x 0,5 - 2 x 2,5	K32		211		
	2 x 0,25 - 2 x 2,5	K382		213		
	2 x 0,25 - 2 x 4	K303		214		
		K36		211		
	2 x 0,5 - 2 x 10	K306K		215		
	2 x 0,5 - 2 x 6	K304K		214		
	2 x 0,25 - 2 x 4	K3014K		215		
	2 x 4 - 2 x 6	K34		212		
	2 x 4 - 2 x 16	K271		216		
K28			217			
Mechanical, electrical, pneumatic crimping tools with interchangeable die / head	2 x 4 - 2 x 16	K354		236	318	
		K18		238	326	
		K22		240	332	
Hand hydraulic crimping tools	2 x 4 - 2 x 16	HK6018		280	326	
		HK60UNV	+UA18	465	326	
		HK6022		282	332	
		HK60UNV	+UA22	465	332	
Battery powered crimping tools	2 x 4 - 2 x 16	EK354ML		250	318	
		EK354		256	318	
		EK505		258	322	
		EK5018		260	326	
		EK60UNV	+UA18	468	326	
		EKM60UNV	+UA18	467	326	
		EK6022		264	332	
		EKM6022		262	332	
		EK60UNV	+UA22	468	332	
		EKM60UNV	+UA22	467	332	
Hydraulic crimping systems	2 x 4 - 2 x 16	THK18		294	326	
		THK22		296	332	
Hydraulic crimping heads	2 x 4 - 2 x 16	PK18		294	326	
		PK60UNV	+UA18	466	326	
		PK22		296	332	
		PK60UNV	+UA22	466	332	