



### Punched cable lugs, Cu



► For connecting of round conductors to DIN EN 60228 Cl. 1 and 2, for example in lightning protection areas

#### Characteristics

- Also for outdoor assembly
- Available with 2 or 4 screws

#### Material

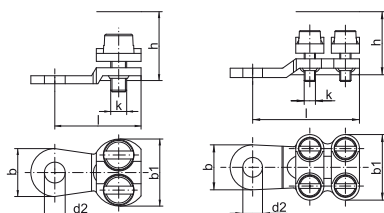
- Copper (ETP)
- Screws: DIN 84 / DIN 933 bronze, F 60

#### Surface

- Tin-plated to protect against corrosion

#### Technical instructions

- Possible as a special bright version on request. Part Number appendix „BK“



Nominal cross section mm <sup>2</sup>	Part No.	Dimension mm						Number of screws	Torque Nm	Weight/pcs. ~kg	Packing unit/pcs
		b	b1	d2	k	h	l				
6 - 10	<b>572R6</b>	15.0	18.0	6.5	M4	10	23.0	2	4	1.30	50
10 - 16	<b>573R6</b>	15.0	20.5	6.5	M5	14	27.0	2	6	1.30	50
	<b>573R8</b>	15.0	20.5	8.5	M5	14	27.0	2	6	1.30	50
16 - 25	<b>574R8</b>	15.0	25.0	8.5	M5	16	30.0	2	6	2.75	50
	<b>584R8</b>	18.5	22.5	8.5	M5	16	36.0	4	6	3.70	25
25 - 35	<b>584R10</b>	19.5	22.5	10.5	M5	16	37.0	4	6	3.75	25
	<b>575R8</b>	18.5	24.0	8.5	M5	16	25.5	2	6	2.50	50
35 - 50	<b>585R8</b>	18.5	24.0	8.5	M5	16	38.5	4	6	4.30	25
	<b>585R10</b>	21.5	24.0	10.5	M5	16	42.0	4	6	4.65	25
50 - 70	<b>585R12</b>	21.5	24.0	13.0	M5	16	42.0	4	6	4.50	25
	<b>586R10</b>	19.0	28.0	10.5	M6	19	46.0	4	8	6.75	25
70 - 95	<b>586R12</b>	21.0	28.0	13.0	M6	19	47.0	4	8	6.70	25
	<b>587R10</b>	23.5	31.0	10.5	M6	19	51.0	4	8	9.35	10
95 - 150	<b>587R12</b>	23.5	31.0	13.0	M6	19	51.0	4	8	9.30	10
	<b>588R10</b>	24.0	34.0	10.5	M6	25	57.0	4	8	12.00	10
150 - 240	<b>588R12</b>	24.0	34.0	13.0	M6	25	57.0	4	8	11.85	10
	<b>589R10</b>	30.0	42.0	10.5	M8	32	61.0	4	20	20.15	10
185 - 300	<b>589R12</b>	30.0	42.0	13.0	M8	32	61.0	4	20	20.20	10
	<b>589R16</b>	30.0	42.0	17.0	M8	32	61.5	4	20	20.10	10
150 - 240	<b>590R10</b>	34.0	48.5	10.5	M8	32	68.5	4	20	24.40	5
	<b>590R12</b>	34.0	48.5	13.0	M8	32	68.5	4	20	24.35	5
185 - 300	<b>590R16</b>	34.0	48.5	17.0	M8	32	68.5	4	20	24.30	5
	<b>592R12</b>	32.0	50.0	13.0	M8	37	68.5	4	20	27.95	5
	<b>592R16</b>	32.0	50.0	17.0	M8	37	68.5	4	20	28.00	5