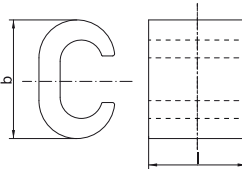


## Branch clamps in C-type, Cu



- ▶ For non-tension copper cables, e.g. to DIN 48201-1
- ▶ Ideal for clamping identical conductor cross-sections e.g. to VDE 60228 Cl. 1 and 2
- ▶ No need to cut the main conductor

### Material

- Copper (ETP)

### Surface

- Tin-plated to protect against corrosion

### Technical instructions

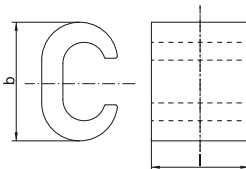
- Optimum conducting characteristics in combination with compound
- Tool: see page 133

### Additional information

- Part Number appendix for bright version „BK“
- rm = round multi-stranded; re = round single solid
- \* = Also suitable for 25 mm<sup>2</sup> round solid

Part No.	Hint	Cross section main conductor mm <sup>2</sup> rm/re		Hint	Dimension mm		Weight/pcs. ~kg	Packing unit/pcs
		Main conductor	Tab conductor		b	l		
CK16		16/25	16/25		16.0	15	0.94	25
CK25	*	25/35	25/35	*	20.2	16	1.68	25
CK35		35/50	35/50		25.7	22	3.42	25
CK50		50/-	50/-		28.0	23	4.88	25
CK70		70/-	70/-		34.16	28	9.69	10
CK95		95/-	95/-		35.0	25	7.30	10

## Branch clamps in C-type, Cu, multi-purpose clamps



- ▶ For non-tension copper cables, e.g. to DIN 48201-1
- ▶ Ideal for clamping non-identical conductor cross-sections e.g. to VDE 60228 Cl. 1 and 2
- ▶ No need to cut the main conductor

### Material

- Copper (ETP)

### Surface

- Tin-plated to protect against corrosion

### Technical instructions

- Optimum conducting characteristics in combination with compound
- Tool: see page 133

### Additional information

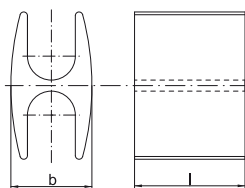
- Part Number appendix for bright version „BK“
- rm = round multi-stranded; re = round single solid

Part No.	Cross section main conductor mm <sup>2</sup> rm/re		Dimension mm		Weight/pcs. ~kg	Packing unit/pcs
	Main conductor	Tab conductor	b	l		
MCK1010	6 - 10/10	4 - 6/4 - 10	11.8	12	0.460	25
MCK1016	10 - 16/16	4 - 10/4 - 10	19.1	17	1.900	25
MCK1025	16 - 25/25	4 - 10/4 - 10	19.3	17	1.900	25
MCK3535	16 - 25/25 - 35	16 - 25/16 - 35	20.4	17	1.750	25
MCK2550	35/50	4 - 25/4 - 25	24.6	23	4.400	25
MCK5050	35/50	16 - 35/25 - 50	26.5	23	4.200	25
MCK3570	50 - 70/-	4 - 35/4 - 35	33.8	28	10.700	10

## Branch clamps in C-type, Cu, multi-purpose clamps

Part No.	Cross section main conductor mm <sup>2</sup> rm/re		Dimension mm		Weight/pcs. ~kg	Packing unit/pcs
	Main conductor	Tab conductor	b	l		
<b>MCK3595</b>	95/-	16 - 35	41.0	30	15.000	10
<b>MCK7095</b>	95/-	35 - 70	41.0	30	14.000	10
<b>MCK120120</b>	120/-	35 - 120	45.0	30	16.550	10
<b>MCK150150</b>	150/-	70 - 150	53.0	35	23.000	5
<b>MCK185185</b>	185/-	95 - 185	60.0	40	33.000	5

## Branch clamps in H-type, Cu



- ▶ For non-tension copper cables, e.g. to DIN 48201-1
- ▶ Ideal for clamping identical conductor cross-sect. e.g. to DIN EN 60228 Cl. 1 and 2
- ▶ Lightning protection tested to EN 50164-1
- ▶ No need to cut the main conductor

### Characteristics

- H-shape allows simple processing
- Optimum conducting characteristics when used with compound

### Material

- Copper (ETP)

### Surface

- Tin-plated to protect against corrosion

### Technical instructions

- Tool: see page 134

### Additional information

- Part Number appendix for bright version „BK“
- \* = To EN 50164-1 lightning current tested

Part No.	Cross section main conductor mm <sup>2</sup> rm/re		Hint	Dimension mm		Weight/pcs. ~kg	Packing unit/pcs
	Main conductor	Tab conductor		b	l		
<b>AH7070</b>	70	70	*	17.0	28.0	6.5	25
<b>AH9595</b>	95	95		22.0	30.0	10.0	25
<b>AH120120</b>	120	120		24.0	25.0	9.8	25

## Compound for branch clamps



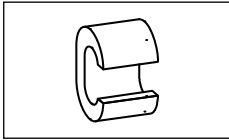
- ▶ Optimum conductivity properties for processing aluminium cable lugs and connectors and branch clamps (C and H-type)

### Characteristics

- Water-resistant, with corundum for destroying the oxidation layer
- Content/tin: 0.125 kg

Part No.

**KF125**



## Tool application chart

### C-Clamps

Tool type	Crimping range corresponds to nominal cross-section mm <sup>2</sup>	Crimping Tool		Catalogue page		Crimp profile
		Part No.	Crimping head / adapter	Crimping Tool	Crimping die	
Mechanical, electrical, pneumatic crimping tools with interchangeable die / head	4 - 35	K354		236	317	○
	4 - 50	K18		238	325	○
	4 - 70	K22		240	331	○
Hand hydraulic crimping tools	4 - 50	HK6018		280	325	○
		HK60UNV	+UA18	465	325	○
	4 - 70	HK6022		282	331	○
		HK60UNV	+UA22	465	331	○
	10 - 70	HK12030		286	337	○
		HK12042		288	337	○
HK120U			290	337	○	
Battery powered crimping tools	4 - 35	EK354ML		250	317	○
		EK354		256	317	○
	4 - 70	EK505		258	321	○
	4 - 50	EK5018		260	325	○
		EK60UNV	+UA18	468	325	○
		EKM60UNV	+UA18	467	325	○
	4 - 70	EK6022		264	331	○
		EKM6022		262	331	○
		EK60UNV	+UA22	468	331	○
		EKM60UNV	+UA22	467	331	○
	10 - 70	EK12032		270	337	○
		EK12042		272	337	○
		EK120U		274	337	○
		EK135FT	+UA15T	276	337	○
EK120UNV		+UA12T	469	337	○	
Hydraulic crimping systems	4 - 50	THK18		294	325	○
	4 - 70	THK22		296	331	○
	10 - 185	HK252	+25A13	308	337 + 341	○
Hydraulic crimping heads	4 - 50	PK18		294	325	○
		PK60UNV	+UA18	466	325	○
	4 - 70	PK22		296	331	○
		PK60UNV	+UA22	466	331	○
	10 - 70	PK12042		300	337	○
		PK120U		302	337	○
	10 - 185	PK252	+25A13	304	337 + 341	○