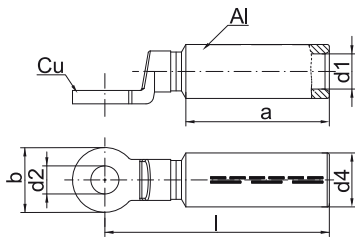




Compression cable lugs, Al/Cu



- ▶ For non-tension connections of aluminium conductors to DIN EN 60228 and aluminium open wires to DIN EN 50182 and pre-rounded sector shaped conductors
- ▶ Tube dimension to DIN 46329
- ▶ With code number for clear tool assignment
- ▶ Filled with contact grease for optimum crimp results

Characteristics

- For connecting non-tensioned aluminium conductors to copper connections in humid environments and outdoors
- Barrier design with oil stop and solid copper palm
- With crimp markings for correct crimp positioning
- Internal chamfer for simple cable insertion

Material

- E-aluminium
- Copper (EN13600)

Surface

- Bright

Technical instructions

- Tool: see page 115

Additional information

- re = round single solid wire, rm = round multi-stranded, se = sector shaped single solid wire, sm = sector shaped multi-stranded, sector shaped conductors must be pre-rounded

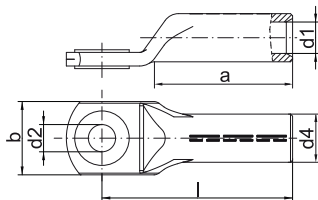
Size of bolt dia.	Part No.	Nominal cross section mm ²		Code	Dimension mm						Number of crimps		Weight 100 St. ~kg Cu	Weight 100 St. ~kg total	Packing unit/pcs
		rm/sm	re/se		a	b	d1	d2	d4	l	Al (7 mm)	Al (wide)			
M 8	363R8	16	25	12	34	24	6.0	8.5	12	68	4	2	4.4	5.9	10
M 10	363R10	16	25	12	34	24	6.0	10.5	12	68	4	2	4.2	5.7	10
M 8	364R8	25	35	12	34	24	6.8	8.5	12	68	4	2	4.4	5.8	10
M 10	364R10	25	35	12	34	24	6.8	10.5	12	68	4	2	4.2	5.6	10
M 12	364R12	25	35	12	34	24	6.8	13.0	12	68	4	2	3.9	5.3	10
M 8	365R8	35	50	14	43	24	8.0	8.5	14	77	5	2	4.4	6.3	10
M 10	365R10	35	50	14	43	24	8.0	10.5	14	77	5	2	4.2	6.1	10
M 12	365R12	35	50	14	43	24	8.0	13.0	14	77	5	2	3.8	5.8	10
M 8	366R8	50	70	16	43	25	9.8	8.5	16	77	5	2	4.4	6.4	10
M 10	366R10	50	70	16	43	25	9.8	10.5	16	77	5	2	4.2	6.2	10
M 12	366R12	50	70	16	43	25	9.8	13.0	16	77	5	2	3.9	5.9	10
M 8	367R8	70	95	18	52	25	11.2	8.5	18.5	84.5	6	3	3.9	6.9	10
M 10	367R10	70	95	18	50	25	11.2	10.5	18.5	85	6	3	4.2	7.4	10
M 12	367R12	70	95	18	50	25	11.2	13.0	18.5	85	6	3	3.9	7.1	10
M 8	368R8	95	120	22	56	30	13.2	8.5	22	90.5	6	3	4.1	8.0	5
M 10	368R10	95	120	22	50.5	30	13.2	10.5	22	90.5	6	3	7.4	11.4	10
M 12	368R12	95	120	22	50.5	30	13.2	13.0	22	90.5	6	3	6.8	10.8	10
M 16	368R16	95	120	22	50.5	30	13.2	17.0	22	90.5	6	3	6.4	10.4	10
M 8	369R8	120	150	22	50.5	30	14.7	8.5	23	95	6	3	3.9	8.3	5
M 12	369R12	120	150	22	50.5	30	14.7	13.0	23	92.0	6	3	6.8	11.4	5
M 16	369R16	120	150	22	50.5	30	14.7	17.0	23	92.0	6	3	6.4	10.8	5
M 12	370R12	150	185	25	62	30	16.3	13.0	25	104.0	6	3	6.8	13.1	5
M 16	370R16	150	185	25	62	30	16.3	17.0	25	104.0	6	3	6.4	12.7	5
M 10	371R10	185	240	28	62	30	18.3	10.5	28.5	105.5	6	3	10.3	18.6	5
M 12	371R12	185	240	28	62	35	18.3	13.0	28.5	105.5	6	3	10.1	18.4	5
M 16	371R16	185	240	28	62	35	18.3	17.0	28.5	105.5	6	3	9.3	17.6	5

see next page

Compression cable lugs, Al/Cu

Size of bolt dia.	Part No.	Nominal cross section mm ²			Code	Dimension mm						Number of crimps		Weight 100 St. ~kg Cu	Weight 100 St. ~kg total	Packing unit/pcs
		rm/sm	re/se			a	b	d1	d2	d4	l	Al (7 mm)	Al (wide)			
M 20	371R20	185	240	28	60	35	18.3	21.0	28.5	107.5	6	3	10.1	18.4	5	
M 10	372R10	240	300	32	70	35	21.0	10.5	32	118.5	8	3	12.1	22.5	5	
M 12	372R12	240	300	32	70	35	21.0	13.0	32	118.5	8	3	11.8	22.2	5	
M 16	372R16	240	300	32	70	35	21.0	17.0	32	118.5	8	3	11.0	21.4	5	
M 20	372R20	240	300	32	70	35	21.0	21.0	32	118.5	8	3	10.1	20.5	5	
M 12	373R12	300	--	34	70	36	23.3	13.0	34	123.5	8	3	17.7	33.7	2	
M 16	373R16	300	--	34	70	36	23.3	17.0	34	123.5	8	3	16.9	32.9	2	
M 20	373R20	300	--	34	70	40	23.3	21.0	34	123.5	8	3	16.0	32.0	1	
M 12	374R12	400	--	38	73	40	26.0	13.0	38.5	150.5	--	4	25.6	37.4	1	

Compression cable lugs, Al/Cu with Cu eye



- ▶ For non-tension connections of aluminium conductors to DIN EN 60228 and aluminium cables to DIN EN 50182
- ▶ Tube dimension to DIN 46329
- ▶ For pre-rounded sector shaped conductors
- ▶ Unique tool assignment due to coding
- ▶ Filled with contact grease for optimum crimp characteristics

Characteristics

- For connecting non-tension aluminium connections using Cu-washers in humid areas
- With Cu eyelet in screw-on area
- Easy to process due to crimp markings
- Simple cable entry due to internal chamfer

Material

- E-aluminium
- Copper (EN13600)

Surface

- Bright

Technical instructions

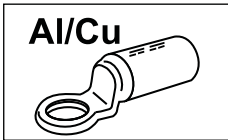
- Tool: see page 115

Additional information

- re = round single solid wire, rm = round multi-stranded, se = sector shaped single solid wire, sm = sector shaped multi-stranded, sector shaped conductors must be pre-rounded

Size of bolt dia.	Part No.	Nominal cross section mm ²			Code	Dimension mm						Number of crimps		Weight 100 St. ~kg Cu	Weight 100 St. ~kg total	Packing unit/pcs
		rm/sm	re/se			a	b	d1	d2	d4	l	Al (7 mm)	Al (wide)			
M 6	302R6	10	16	10	32	18	5.0	6.5	10	52	4	2	0.260	1.20	10	
M 8	302R8	10	16	10	32	22	5.0	8.5	10	52	4	2	0.580	1.50	10	
	303R8	16	25	12	32	22	5.8	8.5	12	52	4	2	0.600	1.95	10	
M 10	303R10	16	25	12	32	25	5.8	10.5	12	52	4	2	0.600	2.00	10	
M 8	304R8	25	35	12	38	22	7.0	8.5	12	60	4	2	0.625	2.00	10	
	304R10	25	35	12	38	25	7.0	10.5	12	60	4	2	0.900	2.10	10	
M 10	305R10	35	50	14	42	26	8.2	10.5	14	67	5	2	0.800	3.00	10	
	305R12	35	50	14	42	30	8.2	13.0	14	67	5	2	1.120	3.10	10	
M 10	306R10	50	70	16	45	27	10.0	10.5	16	72	5	2	0.900	3.60	10	
M 12	306R12	50	70	16	45	30	10.0	13.0	16	72	5	2	1.120	3.80	10	
M 10	307R10	70	95	18	55	29	11.5	10.5	18.5	86	6	3	1.075	5.60	10	

see next page



Tool application chart

Compression cable lugs and connectors made from Al/Cu
The tools of the copper side of our Al/Cu compression joints you will find in the tool application chart of copper compression cable lugs and connectors acc. to DIN

Tool type	Crimping range corresponds to nominal cross-section mm ²	Crimping Tool		Catalogue page		Crimp profile
		Part No.	Crimping head / adapter	Crimping Tool	Crimping die	
mechanical, electrical, pneumatic crimping tools with interchangeable die / head	10-70	K354		236	317	⬡
	10-185	K18		238	325	⬡
	10-300	K22		240	330	⬡
Hand hydraulic crimping tools	10-185	HK6018		280	325	⬡
		HK60UNV	+UA18	465	325	⬡
	10-300	HK6022		282	330	⬡
		HK60UNV	+UA22	465	330	⬡
		HK12030		286	336	⬡
		HK12042		288	336	⬡
		HK120U		290	336	⬡
Battery powered crimping tools	10-70	EK354ML		250	317	⬡
		EK354		256	317	⬡
	10-185	EK5018		260	325	⬡
		EK60UNV	+UA18	468	325	⬡
		EKM60UNV	+UA18	467	325	⬡
	10-300	EK6022		264	330	⬡
		EKM6022		262	330	⬡
		EK60UNV	+UA22	468	330	⬡
		EKM60UNV	+UA22	467	330	⬡
		EK12032		270	336	⬡
		EK12042		272	336	⬡
		EK120U		274	336	⬡
		EK135FT	+UA15T	276	336	⬡
		EK120UNV	+UA12T	469	336	⬡
	50-240	EKM60ID		268		⬡
Hydraulic crimping systems	10-185	THK18		294	325	⬡
	10-300	THK22		296	330	⬡
	10-500	HK252	+25A13	308	336 + 340	⬡
	150-500	HK45		309	342	⬡
Hydraulic crimping heads	10-185	PK18		294	325	⬡
		PK60UNV	+UA18	466	325	⬡
	10-300	PK22		296	330	⬡
		PK60UNV	+UA22	466	330	⬡
		PK12042		300	336	⬡
		PK120U		302	336	⬡
	10-500	PK252	+25A13	304	336 + 340	⬡
	150-500	PK45		306	342	⬡