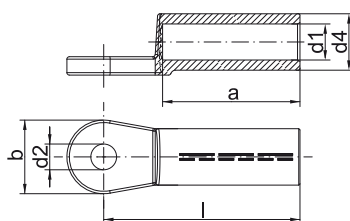




Compression cable lugs to DIN, Al



- ▶ For non-tension connections of aluminium conductors to DIN EN 60228 and aluminium cables to DIN EN 50182
- ▶ For pre-rounded sector shaped conductors
- ▶ To DIN 46329
- ▶ With code number for clear tool assignment for clear tool assignment
- ▶ Filled with contact grease for optimum crimp characteristics

Characteristics

- Barrier design with oil stop
- Optional tin-plated (20 µm) version to connect copper bus bars in dry indoor areas
- Simple and safe connection due to flat contact surfaces and internal chamfer
- Unique tool assignment due to DIN die coding

Material

- E-aluminium

Surface

- Bright

Technical instructions

- Tool: see page 103



Additional information

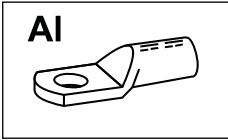
- Part Number appendix for tinned version „V“
- re = round single solid wire, rm = round multi-stranded, se = sector shaped single solid wire, sm = sector shaped multi-stranded, sector shaped conductors must be pre-rounded
- 70 - 240 mm² UL-tested (tin-plated version)
- * = not standardised



| Size of bolt dia. | Part No. | Nominal cross section mm ² | | Hint | Code | Dimension mm | | | | | | Number of crimps | | Weight 100 pcs. ~kg | Packing unit/pcs |
|-------------------|---------------|---------------------------------------|-------|------|------|--------------|----|------|------|------|----|------------------|-----------|---------------------|------------------|
| | | rm/sm | re/se | | | a | b | d1 | d2 | d4 | l | Al (7 mm) | Al (wide) | | |
| M 8 | 263R8 | 16 | 25 | * | 12 | 30 | 20 | 5.8 | 8.4 | 12 | 50 | 4 | 2 | 1.20 | 4 |
| M 10 | 263R10 | 16 | 25 | * | 12 | 30 | 20 | 5.8 | 10.5 | 12 | 50 | 4 | 2 | 1.20 | 4 |
| M 8 | 264R8 | 25 | 35 | | 12 | 30 | 25 | 6.8 | 8.4 | 12 | 50 | 4 | 2 | 1.30 | 4 |
| M 10 | 264R10 | 25 | 35 | | 12 | 30 | 25 | 6.8 | 10.5 | 12 | 50 | 4 | 2 | 1.24 | 4 |
| M 12 | 264R12 | 25 | 35 | | 12 | 30 | 25 | 6.8 | 13.0 | 12 | 50 | 4 | 2 | 1.22 | 4 |
| M 8 | 265R8 | 35 | 50 | | 14 | 42 | 25 | 8.0 | 8.4 | 14 | 62 | 5 | 2 | 2.50 | 4 |
| M 10 | 265R10 | 35 | 50 | | 14 | 42 | 25 | 8.0 | 10.5 | 14 | 62 | 5 | 2 | 1.98 | 4 |
| M 12 | 265R12 | 35 | 50 | | 14 | 42 | 25 | 8.0 | 13.0 | 14 | 62 | 5 | 2 | 2.50 | 4 |
| M 8 | 266R8 | 50 | 70 | | 16 | 42 | 25 | 9.8 | 8.4 | 16 | 62 | 5 | 2 | 2.75 | 4 |
| M 10 | 266R10 | 50 | 70 | | 16 | 42 | 25 | 9.8 | 10.5 | 16 | 62 | 5 | 2 | 2.70 | 4 |
| M 12 | 266R12 | 50 | 70 | | 16 | 42 | 25 | 9.8 | 13.0 | 16 | 62 | 5 | 2 | 2.65 | 4 |
| M 8 | 267R8 | 70 | 95 | | 18 | 52 | 25 | 11.2 | 8.4 | 18.5 | 72 | 6 | 3 | 3.45 | 4 |
| M 10 | 267R10 | 70 | 95 | | 18 | 52 | 25 | 11.2 | 10.5 | 18.5 | 72 | 6 | 3 | 3.80 | 4 |
| M 12 | 267R12 | 70 | 95 | | 18 | 52 | 25 | 11.2 | 13.0 | 18.5 | 72 | 6 | 3 | 3.35 | 4 |
| M 10 | 268R10 | 95 | 120 | | 22 | 56 | 25 | 13.2 | 10.5 | 22 | 75 | 6 | 3 | 6.90 | 4 |
| M 12 | 268R12 | 95 | 120 | | 22 | 56 | 25 | 13.2 | 13.0 | 22 | 75 | 6 | 3 | 4.92 | 4 |
| M 16 | 268R16 | 95 | 120 | * | 22 | 56 | 25 | 13.2 | 17.0 | 22 | 75 | 6 | 3 | 6.00 | 4 |
| M 10 | 269R10 | 120 | 150 | | 22 | 56 | 30 | 14.7 | 10.5 | 23 | 80 | 6 | 3 | 5.95 | 4 |
| M 12 | 269R12 | 120 | 150 | | 22 | 56 | 30 | 14.7 | 13.0 | 23 | 80 | 6 | 3 | 5.84 | 4 |
| M 16 | 269R16 | 120 | 150 | | 22 | 56 | 30 | 14.7 | 17.0 | 23 | 80 | 6 | 3 | 6.60 | 4 |
| M 10 | 270R10 | 150 | 185 | | 25 | 60 | 30 | 16.3 | 10.5 | 25 | 90 | 6 | 3 | 8.50 | 4 |

Compression cable lugs to DIN, Al

| Size of bolt dia. | Part No. | Nominal cross section mm ² | | Hint | Code | Dimension mm | | | | | | Number of crimps | | Weight 100 pcs. ~kg | Packing unit/pcs |
|-------------------|---------------|---------------------------------------|-------|------|------|--------------|----|------|------|------|-----|------------------|-----------|---------------------|------------------|
| | | rm/sm | re/se | | | a | b | d1 | d2 | d4 | l | Al (7 mm) | Al (wide) | | |
| M 12 | 270R12 | 150 | 185 | | 25 | 60 | 30 | 16.3 | 13.0 | 25 | 90 | 6 | 3 | 7.73 | 4 |
| M 16 | 270R16 | 150 | 185 | | 25 | 60 | 30 | 16.3 | 17.0 | 25 | 90 | 6 | 3 | 7.60 | 4 |
| M 10 | 271R10 | 185 | 240 | | 28 | 60 | 30 | 18.3 | 10.5 | 28.5 | 91 | 6 | 3 | 11.00 | 4 |
| M 12 | 271R12 | 185 | 240 | | 28 | 60 | 30 | 18.3 | 10.5 | 28.5 | 91 | 6 | 3 | 9.88 | 4 |
| M 16 | 271R16 | 185 | 240 | | 28 | 60 | 30 | 18.3 | 17.0 | 28.5 | 91 | 6 | 3 | 10.10 | 4 |
| M 20 | 271R20 | 185 | 240 | * | 28 | 60 | 30 | 18.3 | 21.0 | 28.5 | 91 | 6 | 3 | 10.00 | 4 |
| M 10 | 272R10 | 240 | 300 | * | 32 | 70 | 38 | 21.0 | 10.5 | 32 | 103 | 8 | 3 | 15.50 | 4 |
| M 12 | 272R12 | 240 | 300 | | 32 | 70 | 38 | 21.0 | 13.0 | 32 | 103 | 8 | 3 | 13.80 | 4 |
| M 16 | 272R16 | 240 | 300 | | 32 | 70 | 38 | 21.0 | 17.0 | 32 | 103 | 8 | 3 | 13.48 | 4 |
| M 20 | 272R20 | 240 | 300 | | 32 | 70 | 38 | 21.0 | 21.0 | 32 | 103 | 8 | 3 | 15.00 | 4 |
| M 12 | 273R12 | 300 | -- | | 34 | 70 | 38 | 23.3 | 13.0 | 34 | 103 | 8 | 3 | 17.60 | 1 |
| M 16 | 273R16 | 300 | -- | | 34 | 70 | 38 | 23.3 | 17.0 | 34 | 103 | 8 | 3 | 17.28 | 1 |
| M 20 | 273R20 | 300 | -- | | 34 | 70 | 38 | 23.3 | 21.0 | 34 | 103 | 8 | 3 | 17.40 | 1 |
| M 12 | 274R12 | 400 | -- | | 38 | 73 | 38 | 26.0 | 13.0 | 38.5 | 116 | -- | 4 | 38.00 | 1 |
| M 16 | 274R16 | 400 | -- | | 38 | 73 | 38 | 26.0 | 17.0 | 38.5 | 116 | -- | 4 | 37.40 | 1 |
| M 20 | 274R20 | 400 | -- | | 38 | 73 | 38 | 26.0 | 21.0 | 38.5 | 116 | -- | 4 | 40.20 | 1 |
| M 12 | 275R12 | 500 | -- | | 44 | 79 | 44 | 29.0 | 13.0 | 44 | 122 | -- | 4 | 43.70 | 1 |
| M 16 | 275R16 | 500 | -- | | 44 | 79 | 44 | 29.0 | 17.0 | 44 | 122 | -- | 4 | 43.30 | 1 |
| M 20 | 275R20 | 500 | -- | | 44 | 79 | 44 | 29.0 | 21.0 | 44 | 122 | -- | 4 | 43.00 | 1 |



Tool application chart

Compression cable lugs and connectors made from E-AI

Compression cable lugs for full-tension connections from AI conductors DIN EN 50182, 16 - 95 mm²

| Tool type | Crimping range corresponds to nominal cross-section mm ² | Crimping Tool | | Catalogue page | | Crimp profile |
|--|---|---------------|-------------------------|----------------|--------------|---------------|
| | | Part No. | Crimping head / adapter | Crimping Tool | Crimping die | |
| Mechanical, electrical, pneumatic crimping tools with interchangeable die / head | 10 - 70 | K354 | | 236 | 317 | |
| | 10 - 185 | K18 | | 238 | 325 | |
| | 10 - 300 | K22 | | 240 | 330 | |
| Hand hydraulic crimping tools | 10 - 185 | HK6018 | | 280 | 325 | |
| | | HK60UNV | +UA18 | 465 | 325 | |
| | 10 - 300 | HK6022 | | 282 | 330 | |
| | | HK60UNV | +UA22 | 465 | 330 | |
| | | HK12030 | | 286 | 336 | |
| | | HK12042 | | 288 | 336 | |
| | | HK120U | | 290 | 336 | |
| Battery powered crimping tools | 10 - 70 | EK354ML | | 250 | 317 | |
| | | EK354 | | 256 | 317 | |
| | 10 - 150 | EK505 | | 258 | 321 | |
| | 10 - 185 | EK5018 | | 260 | 325 | |
| | | EK60UNV | +UA18 | 468 | 325 | |
| | | EKM60UNV | +UA18 | 467 | 325 | |
| | 10 - 300 | EK6022 | | 264 | 330 | |
| | | EKM6022 | | 262 | 330 | |
| | | 50 - 240 | EKM60ID* | | 268 | |
| | 10 - 300 | EK60UNV | +UA22 | 468 | 330 | |
| | | EKM60UNV | +UA22 | 467 | 330 | |
| | | EK120UNV | | 469 | | |
| | | EK12032 | | 270 | 336 | |
| | | EK12042 | | 272 | 336 | |
| | | EK120U | +UA15T | 274 | 336 | |
| | | EK135FT | +UA12T | 276 | 336 | |
| Hydraulic crimping systems | | 10 - 185 | THK18 | | 294 | 325 |
| | 10 - 300 | THK22 | | 296 | 330 | |
| | | THK120 | | 300 | 336 | |
| | 10 - 500 | HK252 | +25A13 | 308 | 336 + 340 | |
| | 150 - 500 | HK45 | | 309 | 342 | |
| Hydraulic crimping heads | 10 - 185 | PK18 | | 294 | 325 | |
| | | PK60UNV | +UA18 | 466 | 325 | |
| | 10 - 300 | PK22 | | 296 | 330 | |
| | | PK60UNV | +UA22 | 466 | 330 | |
| | | PK12042 | | 300 | 336 | |
| | | PK120U | | 302 | 336 | |
| | 10 - 500 | PK252 | +25A13 | 304 | 336 + 340 | |
| | 50 - 240 | PK60ID* | | 299 | | |
| | 150 - 500 | PK45 | | 306 | 342 | |

* Not suitable for full-tension connections