



Tubular cable lugs, Cu, solid conductor type



- ▶ For single-stranded round conductors, e.g. to DIN EN 60228 Cl. 1
- ▶ For pre-rounded sector shaped conductors
- ▶ Safe and secure connecting of solid conductors

Characteristics

- Annealed material optimises material and crimping properties
- Simple and safe connection due to flat contact surfaces and internal chamfer

Material

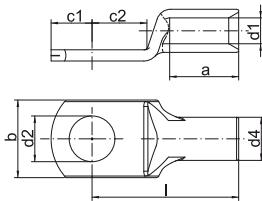
- Copper (EN13600)

Surface

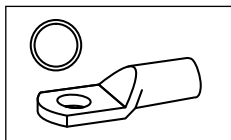
- Tin-plated to protect against corrosion

Technical instructions

- Tool: see page 44



| Nominal cross section mm ² | Size of bolt dia. | Part No. | Dimension mm | | | | | | | | Weight/100 pcs. ~ kg | Packing unit/pcs |
|---------------------------------------|-------------------|---------------|--------------|----|------|------|----|-------|------|------|----------------------|------------------|
| | | | d1 | a | b | d2 | d4 | c1 | c2 | l | | |
| 6 | M5 | SR65 | 3.0 | 8 | 9.0 | 5.3 | 5 | 4.75 | 6.0 | 17.0 | 0.213 | 25 |
| | M6 | SR66 | 3.0 | 8 | 10.0 | 6.4 | 5 | 6.50 | 6.5 | 19.0 | 0.220 | 25 |
| 10 | M6 | SR106 | 4.0 | 9 | 10.0 | 6.4 | 6 | 7.00 | 6.5 | 19.0 | 0.300 | 25 |
| | M8 | SR108 | 4.0 | 9 | 14.0 | 8.4 | 6 | 8.50 | 9.5 | 22.0 | 0.320 | 25 |
| 16 | M6 | SR166 | 5.0 | 12 | 12.5 | 6.4 | 8 | 6.50 | 7.0 | 23.5 | 0.800 | 25 |
| | M8 | SR168 | 5.0 | 12 | 15.0 | 8.5 | 8 | 9.00 | 9.0 | 26.0 | 0.900 | 25 |
| 25 | M6 | SR256 | 6.2 | 15 | 14.0 | 6.5 | 10 | 7.50 | 7.5 | 30.0 | 1.560 | 25 |
| | M8 | SR258 | 6.2 | 15 | 16.0 | 8.5 | 10 | 10.00 | 10.0 | 32.0 | 1.700 | 25 |
| 35 | M8 | SR358 | 7.0 | 15 | 16.0 | 8.5 | 10 | 10.00 | 10.0 | 32.0 | 1.310 | 25 |
| | M10 | SR3510 | 7.0 | 15 | 18.0 | 10.5 | 10 | 12.00 | 12.0 | 34.0 | 1.570 | 25 |
| 50 | M6 | SR506 | 8.5 | 17 | 17.0 | 6.5 | 12 | 7.50 | 7.5 | 32.0 | 1.850 | 25 |
| | M8 | SR508 | 8.5 | 17 | 17.0 | 8.4 | 12 | 10.00 | 10.0 | 34.0 | 2.000 | 25 |
| | M10 | SR5010 | 8.5 | 17 | 19.0 | 10.5 | 12 | 12.00 | 12.0 | 37.0 | 2.130 | 25 |



Tool application chart

Tubular cable lugs and butt connectors for solid conductors

| Tool type | Crimping range corresponds to nominal cross-section mm ² | Crimping Tool | | Catalogue page | | Crimp profile |
|-------------------------------------------------------------------------------------------|---------------------------------------------------------------------|---------------|-------------------------|----------------|--------------|---------------|
| | | Part No. | Crimping head / adapter | Crimping Tool | Crimping die | |
| Mechanical crimping tools | 0.75-16 | K02 | | 224 | | |
| | 1.5-4 | K93 | | 223 | | |
| | 6-10 | K94 | | 223 | | |
| | 25-50* | K05 | | 229 | | |
| Mechanical, electrical, pneumatic crimping tools with interchangeable dies / heads | 1.5-10 | K50 | | 235 | 312 | |
| | | EK50ML | | 244 | 312 | |
| | 1.5-16 | K354 | | 236 | 315 | |
| | | K18 | | 238 | 324 | |
| | | K22 | | 240 | 328 | |
| Hand hydraulic crimping tools | 1.5-16 | HK6018 | | 280 | 324 | |
| | | HK60UNV | +UA18 | 465 | 324 | |
| | | HK6022 | | 282 | 328 | |
| | | HK60UNV | +UA22 | 465 | 328 | |
| Battery powered crimping tools | 1.5-10 | EK1550ML | | 248 | 312 | |
| | 1.5-16 | EK354ML | | 250 | 315 | |
| | | EK354 | | 256 | 315 | |
| | | EK5018 | | 260 | 324 | |
| | | EK60UNV | +UA18 | 468 | 324 | |
| | | EKM60UNV | +UA18 | 467 | 324 | |
| | | EK6022 | | 264 | 328 | |
| | | EKM6022 | | 262 | 328 | |
| | | EK60UNV | +UA22 | 468 | 328 | |
| | | EKM60UNV | +UA22 | 467 | 328 | |
| Hydraulic crimping systems | 1.5-16 | THK18 | | 294 | 324 | |
| | | THK22 | | 296 | 328 | |
| Hydraulic crimping heads | 1.5-16 | PK18 | | 294 | 324 | |
| | | PK60UNV | +UA18 | 466 | 324 | |
| | | PK22 | | 296 | 328 | |
| | | PK60UNV | +UA22 | 466 | 328 | |

*For cross-sections 25 + 35 mm² use the die size 25 mm².

For cross-section 50 mm² use the die size 35 mm².

We recommend 2 crimps on each side