

Insulated butt connectors, Cu, standard type



- ▶ For multi-stranded round conductors, e.g. to DIN EN 60228 Cl. 2
- ▶ For pre-rounded multi-stranded sector shaped conductors
- ▶ No additional insulation of the crimped connection required
- ▶ Is directly crimped with the insulation

Characteristics

- With buttmarks for precise cable insertion
- Annealed material optimises material and crimping properties
- Simple cable entry due to internal chamfer
- Heat resistant to 105° C

Material

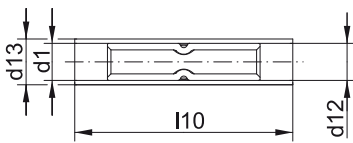
- Connector: Copper (EN 13600)
- Insulation sleeve: PA, halogen-free



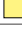


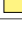

Surface

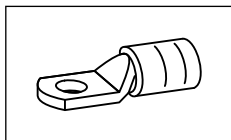
- Tin-plated to protect against corrosion

Technical instructions

- Tool: see page 40
- Dimensions of butt connectors can be found on page 21
- Sleeves for compacted conductors and sleeves for 3-core and 4-core cables, see chapter „Sleeves for compacted conductors and sector shaped conductors - Cu“



Nominal cross section mm ²	Part No.	Colour	Dimension mm				Gewicht 100 St. ~kg Cu	Gewicht 100 St. ~kg Ges.	Packing unit/pcs
			d1	d12	d13	l10			
10	622R		4,5	7,0	9,0	42	0,72	0,84	25
16	623R		5,5	8,5	10,5	50	1,00	1,16	25
25	624R		7,0	10,0	12,0	57	1,41	1,63	25
35	625R		8,5	12,0	14,4	65	2,24	2,60	25
50	626R		10,0	14,0	16,4	72	3,36	3,81	25
70	627R		12,0	16,4	19,0	80	4,87	5,46	25
95	628R		13,5	17,8	20,8	87	5,91	6,74	25



Tool application chart

Insulated tubular cable lugs and butt connectors „standard type“

Tool type	Crimping range corresponds to nominal cross-section mm ²	Crimping Tool		Catalogue page		Crimp profile
		Part No.	Crimping head / adapter	Crimping Tool	Crimping die	
Mechanical, electrical, pneumatic crimping tools with interchangeable dies / heads	10 - 70	K354		236	314	○
	10 - 95	K18		238	323	○
	10 - 150	K22		240	327	○
Hand hydraulic crimping tools	10 - 95	HK6018		280	323	○
		HK60UNV	+UA18	465	323	○
	10 - 150	HK6022		282	327	○
		HK60UNV	+UA22	465	327	○
		HK12030		286	333	○
		HK12042		288	333	○
		HK120U		290	333	○
Battery powered crimping tools	10 - 70	EK354ML		250	314	○
		EK354		256	314	○
	10 - 95	EK5018		260	323	○
		EK505		258	319	○
		EK60UNV	+UA18	468	323	○
		EKM60UNV	+UA18	467	323	○
		EK6022		262	327	○
	10 - 150	EKM6022		264	327	○
		EK60UNV	+UA22	468	327	○
		EKM60UNV	+UA22	467	327	○
		EK12032		270	333	○
		EK12042		272	333	○
		EK120U		274	333	○
		EK135FT	+UA15T	276	333	○
		EK120UNV	+UA12T	469	333	○
Hydraulic crimping systems	10 - 95	THK18		294	323	○
	10 - 150	THK22		296	327	○
		THK120		300	333	○
		HK252	+25A13	308	333	○
Hydraulic crimping heads	10 - 95	PK18		294	323	○
		PK60UNV	+UA18	466	323	○
	10 - 150	PK22		296	327	○
		PK60UNV	+UA22	466	327	○
		PK12042		300	333	○
		PK120U		302	333	○
		PK252	+25A13	304	333	○