

Insulated tubular cable lugs, Cu, standard type



- ▶ For multi-stranded round conductors, e.g. to DIN EN 60228 Cl. 2
- ▶ For pre-rounded multi-stranded sector shaped conductors
- ▶ No additional insulation of the crimped connection required
- ▶ Is directly crimped with the insulation

Characteristics

- Annealed material optimises material and crimping properties
- Simple and safe connection due to flat contact surfaces and internal chamfer
- Heat resistant to 105° C

Material

- Cable lug: Copper to EN 13600
- Insulation sleeve: PA, halogen-free

Surface

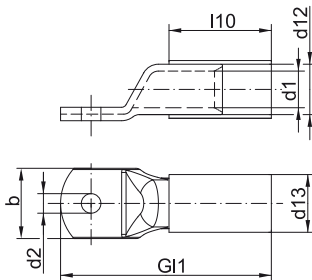
- Tin-plated to protect against corrosion

Technical instructions

- Tool: see page 40
- Dimensions of tubular cable lugs can be found from page 14
- Sleeves for compacted conductors and sleeves for 3-core and 4-core cables, see chapter „Sleeves for compacted conductors and sector shaped conductors - Cu“

Additional information

- Possible as a special version with inspection hole on request.
Part Number appendix „MS“



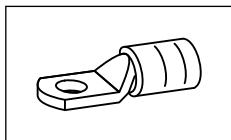
Nominal cross section mm ²	Size of bolt dia.	Part No.	Colour	Dimension mm					weight 100 pcs. ~kg Cu	weight 100 pcs. ~kg Total	Packing unit/ pcs
				d12	d13	d2	G1	l10			
10	M5	602R5	Red	7.0	9.0	5.5	35.5	17.0	0.50	0.548	25
	M6	602R6	Red	7.0	9.0	6.5	35.5	17.0	0.49	0.538	25
	M8	602R8	Red	7.0	9.0	8.5	42.0	17.0	0.58	0.628	25
	M10	602R10	Red	7.0	9.0	10.5	46.0	17.0	0.62	0.668	25
	M12	602R12	Red	7.0	9.0	13.0	49.0	17.0	0.64	0.688	25
16	M5	603R5	Blue	8.5	10.5	5.5	39.5	21.0	0.84	0.907	25
	M6	603R6	Blue	8.5	10.5	6.5	41.3	21.0	0.86	0.927	25
	M8	603R8	Blue	8.5	10.5	8.5	45.5	21.0	0.93	0.997	25
	M10	603R10	Blue	8.5	10.5	10.5	49.5	21.0	0.99	1.057	25
	M12	603R12	Blue	8.5	10.5	13.0	54.0	21.0	1.02	1.087	25
25	M5	604R5	Yellow	10.0	12.0	5.5	45.0	24.0	1.22	1.312	25
	M6	604R6	Yellow	10.0	12.0	6.5	46.5	24.0	1.20	1.292	25
	M8	604R8	Yellow	10.0	12.0	8.5	51.0	24.0	1.31	1.402	25
	M10	604R10	Yellow	10.0	12.0	10.5	55.0	24.0	1.57	1.662	25
	M12	604R12	Yellow	10.0	12.0	13.0	57.0	24.0	1.39	1.482	25
35	M14	604R14	Yellow	10.0	12.0	15.0	61.5	24.0	1.49	1.582	25
	M6	605R6	Red	12.0	14.5	6.5	49.5	27.0	1.85	2.010	25
	M8	605R8	Red	12.0	14.5	8.5	54.0	27.0	2.00	2.160	25
	M10	605R10	Red	12.0	14.5	10.5	59.0	27.0	2.13	2.290	25
	M12	605R12	Red	12.0	14.5	13.0	61.0	27.0	2.12	2.280	25
	M14	605R14	Red	12.0	14.5	15.0	64.5	27.0	2.18	2.340	25
	M16	605R16	Red	12.0	14.5	17.0	68.0	27.0	2.24	2.400	25

See next page



Insulated tubular cable lugs, Cu, standard type

Nominal cross section mm ²	Size of bolt dia.	Part No.	Colour	Dimension mm					Gewicht 100 St. ~kg Cu	Gewicht 100 St. ~kg Ges.	Packing unit/ pcs
				d12	d13	d2	Gl1	l10			
50	M8	606R8	■	14.0	16.5	8.5	59.0	32.0	2.93	3.150	25
	M10	606R10	■	14.0	16.5	10.5	63.0	32.0	3.08	3.300	25
	M12	606R12	■	14.0	16.5	13.0	68.0	32.0	3.23	3.450	25
	M14	606R14	■	14.0	16.5	15.0	71.5	32.0	3.32	3.540	25
	M16	606R16	■	14.0	16.5	17.0	77.0	32.0	3.38	3.600	25
	M20	606R20	■	14.0	16.5	21.0	83.5	32.0	3.46	3.680	25
70	M6	607R6	■	16.4	18.9	6.5	65.5	33.5	4.49	4.760	25
	M8	607R8	■	16.4	18.9	8.5	65.5	33.5	4.38	4.650	25
	M10	607R10	■	16.4	18.9	10.5	66.5	33.5	4.54	4.810	25
	M12	607R12	■	16.4	18.9	13.0	70.5	33.5	4.63	4.900	25
	M16	607R16	■	16.4	18.9	17.0	78.5	33.5	4.24	4.510	25
95	M8	608R8	■	17.8	20.8	8.5	74.0	40.0	5.44	5.85	25
	M10	608R10	■	17.8	20.8	10.5	74.0	40.0	5.40	5.81	25
	M12	608R12	■	17.8	20.8	13.0	76.0	40.0	5.56	5.97	25
120	M10	609R10	■	19.3	22.3	10.5	80.5	41.5	6.57	7.03	10
	M12	609R12	■	19.3	22.3	13.0	80.5	41.5	6.38	6.84	10



Tool application chart

Insulated tubular cable lugs and butt connectors „standard type“

Tool type	Crimping range corresponds to nominal cross-section mm ²	Crimping Tool		Catalogue page		Crimp profile
		Part No.	Crimping head / adapter	Crimping Tool	Crimping die	
Mechanical, electrical, pneumatic crimping tools with interchangeable dies / heads	10 - 70	K354		236	314	○
	10 - 95	K18		238	323	○
	10 - 150	K22		240	327	○
Hand hydraulic crimping tools	10 - 95	HK6018		280	323	○
		HK60UNV	+UA18	465	323	○
	10 - 150	HK6022		282	327	○
		HK60UNV	+UA22	465	327	○
		HK12030		286	333	○
		HK12042		288	333	○
		HK120U		290	333	○
Battery powered crimping tools	10 - 70	EK354ML		250	314	○
		EK354		256	314	○
	10 - 95	EK5018		260	323	○
		EK505		258	319	○
		EK60UNV	+UA18	468	323	○
		EKM60UNV	+UA18	467	323	○
		10 - 150	EK6022		262	327
		EKM6022		264	327	○
		EK60UNV	+UA22	468	327	○
		EKM60UNV	+UA22	467	327	○
		EK12032		270	333	○
		EK12042		272	333	○
		EK120U		274	333	○
		EK135FT	+UA15T	276	333	○
		EK120UNV	+UA12T	469	333	○
Hydraulic crimping systems	10 - 95	THK18		294	323	○
	10 - 150	THK22		296	327	○
		THK120		300	333	○
		HK252	+25A13	308	333	○
Hydraulic crimping heads	10 - 95	PK18		294	323	○
		PK60UNV	+UA18	466	323	○
	10 - 150	PK22		296	327	○
		PK60UNV	+UA22	466	327	○
		PK12042		300	333	○
		PK120U		302	333	○
		PK252	+25A13	304	333	○