



Insulated pin terminals



- ▶ For fine and superfine stranded conductors, e.g. to DIN EN 60228 Cl. 5 and 6
- ▶ To DIN 46231
- ▶ High-quality brazing process in the crimp area
- ▶ Insulation sleeve halogen-free

Characteristics

- Cross-section-dependent colour-coding
- Heat resistant to 105° C
- Easy-Entry insulation for simple cable insertion

Material

- Copper (ETP)
- Insulation sleeve: PA

Surface

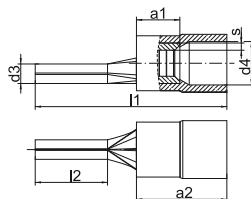
- Tin-plated to protect against corrosion

Technical instructions

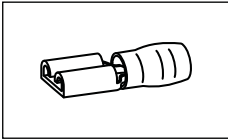
- Tool: see page 173

Additional information

- 0.1 - 0.4 mm² not CSA-tested
- * = not standardised



Nominal cross section mm ²	Nominal size to DIN	Part No.	Colour	Hint	Dimension mm						Weight/ pcs. ~kg	Packing unit/pcs
					a1	a2	d3	d4	l1	l2		
0.1 - 0.4	--	704	□	*	--	--	1.4	--	18.0	9.0	0.020	100
0.5 - 1	1	705	■		5	10.5	1.9	4.5	22.0	10.0	0.065	100
		705K	■	*	5	10.5	1.9	4.5	18.0	6.0	0.060	100
1.5 - 2.5	2.5	710	■		5	11.5	1.9	5.1	23.0	10.0	0.065	100
		710K	■	*	5	11.5	1.9	5.1	19.5	6.5	0.060	100
		710L	■	*	5	11.5	1.9	5.1	27.5	16.0	0.100	100
4 - 6	6	715	□		6	12.5	2.7	6.5	26.0	11.0	0.160	100



Tool application chart

Insulated cable connections

Tool type	Crimping range corresponds to nominal cross-section mm ²	Crimping Tool		Catalogue page		Crimp profile
		Part No.	Crimping head / adapter	Crimping Tool	Crimping die	
Mechanical crimping tools	0,1 - 1	K80		218		○
	0,5 - 6	K82		219		○
	0,5 - 6	K82T		220		○
Mechanical, electrical, pneumatic crimping tools with interchangeable die / head	0,1 - 16	K50		235	313	○
		EK50ML		244	313	○
	0,5 - 6	K507		234		○
Battery powered crimping tools	0,1 - 16	EK1550ML		248	313	○