



Insulated solderless terminals



- ▶ For fine and superfine stranded conductors, e.g. to DIN EN 60228 Cl. 5 and 6
- ▶ To DIN 46237
- ▶ High-quality brazing process in the crimp area
- ▶ Insulation sleeve halogen-free

Characteristics

- Heat resistant to 105° C
- Easy-Entry insulation for simple cable insertion
- Cross-section-dependent colour-coding

Material

- Copper (ETP)
- Insulation sleeve: PA

Surface

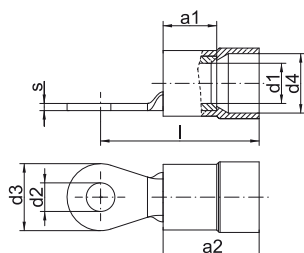
- Tin-plated to protect against corrosion

Technical instructions

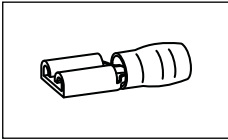
- Tool: see page 173

Additional information

- * = not standardised
- 0.1 - 0.4 mm² not CSA-tested



Nominal cross section mm ²	Nominal size to DIN	Part No.	Colour	Hint	Dimension mm								Weight/ pcs. ~kg	Packing unit/pcs
					a1	a2	d1	d2	d3	d4	l	s		
0.1 - 0.4	--	6192	□	*	--	--	1.0	2.3	5.0	2.2	14.0	0.5	0.020	100
	--	61925	□	*	--	--	1.0	2.6	5.0	2.2	14.0	0.5	0.020	100
	--	6193	□	*	--	--	1.0	3.3	5.0	2.2	14.0	0.5	0.020	100
	--	61935	□	*	--	--	1.0	3.8	6.5	2.2	16.0	0.5	0.025	100
	--	6194	□	*	--	--	1.0	4.4	7.0	2.2	16.0	0.5	0.025	100
	--	6195	□	*	--	--	1.0	5.4	8.0	2.2	15.0	0.5	0.025	100
0.5 - 1	2.5 - 1	62025	■		5	10.5	1.6	2.8	6.0	4.5	16.5	0.8	0.060	100
	3.0 - 1	6203	■		5	10.5	1.6	3.2	6.0	4.5	16.5	0.8	0.060	100
	3.5 - 1	62035	■		5	10.5	1.6	3.7	6.0	4.5	16.5	0.8	0.550	100
	4.0 - 1	6204	■		5	10.5	1.6	4.3	8.0	4.5	17.5	0.8	0.070	100
	5.0 - 1	6205	■		5	10.5	1.6	5.3	10.0	4.5	18.5	0.8	0.090	100
	--	6206	■	*	5	10.5	1.6	6.5	11.0	4.5	20.5	0.8	0.080	100
	--	6208	■	*	5	10.5	1.6	8.4	14.0	4.5	22.5	0.8	0.130	100
--	62010	■	*	5	10.5	1.6	10.5	18.0	4.5	24.5	0.8	0.130	100	
1.5 - 2.5	3.0 - 2.5	6303	■		5	11.5	2.3	3.2	6.0	5.0	17.5	0.8	0.065	100
	3.5 - 2.5	63035	■		5	11.0	2.3	3.7	6.0	5.1	17.5	0.8	0.065	100
	4.0 - 2.5	6304	■		5	11.5	2.3	4.3	8.0	5.1	18.5	0.8	0.080	100
	5.0 - 2.5	6305	■		5	11.5	2.3	5.3	10.0	5.1	20.5	0.8	0.090	100
	6.0 - 2.5	6306	■		5	11.5	2.3	6.5	11.0	5.1	22.5	0.8	0.110	100
	8.0 - 2.5	6308	■		5	11.5	2.3	8.4	14.0	5.1	23.5	0.8	0.130	100
	--	63010	■	*	5	11.5	2.3	10.5	18.0	5.1	25.5	0.8	0.160	100
4 - 6	4.0 - 6	6504	□		6	12.5	3.6	4.3	8.0	6.5	20.5	1.0	0.140	100
	5.0 - 6	6505	□		6	12.5	3.6	5.3	10.0	6.5	21.5	1.0	0.160	100
	6.0 - 6	6506	□		6	12.5	3.6	6.5	11.0	6.5	22.5	1.0	0.170	100
	8.0 - 6	6508	□		6	12.5	3.6	8.4	14.0	6.5	25.5	1.0	0.220	100
	10.0 - 6	65010	□		6	12.5	3.6	10.5	18.0	6.5	27.5	1.0	0.290	100



Tool application chart

Insulated cable connections

Tool type	Crimping range corresponds to nominal cross-section mm ²	Crimping Tool		Catalogue page		Crimp profile
		Part No.	Crimping head / adapter	Crimping Tool	Crimping die	
Mechanical crimping tools	0,1 - 1	K80		218		○
	0,5 - 6	K82		219		○
	0,5 - 6	K82T		220		○
Mechanical, electrical, pneumatic crimping tools with interchangeable die / head	0,1 - 16	K50		235	313	○
		EK50ML		244	313	○
	0,5 - 6	K507		234		○
Battery powered crimping tools	0,1 - 16	EK1550ML		248	313	○