

# 21-V-060 Extension for internal extractor (extension, mounting thread M7)



## DESCRIPTION

The extensions for the internal extractors of series 21 are used for loosening and pulling out deeply seated bearings, bearing outer rings, and bushes in crafts, workshops, and industry. The extensions available in various lengths from 40 to 280 mm allow for a variable application of the internal extractors even in extreme cases.

## APPLICATION AREA

For loosening and extracting deep-seated bearings, bearing outer rings and bushings

## BENEFIT

- Various extension sizes for different applications

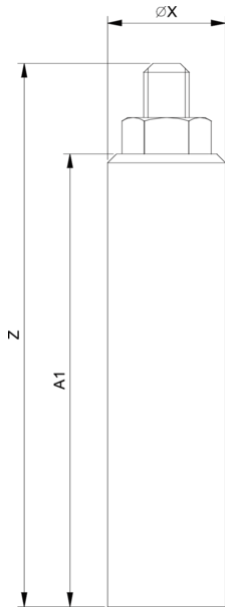
## MASTER DATA

GTIN [EAN]	4021176909221
Country of origin	DE
Case material	Tool steel
Series	21-V
Net weight [kg]	0,11 kg
Package contents	1 piece
Packaging Act	PP 05
Global sales capability given	Yes (REACH, RoHS, POP, PROP65, TSCA)

## SUITABLE FOR

- 21-0\_2-jaw internal extractor
- 21-00\_2-jaw internal extractors
- 21-01\_2-jaw internal extractor
- 21-02\_2-jaw internal extractor
- 21-2\_2-jaw internal extractor

## Extension for internal extractor (extension, mounting thread M7)



Abbreviation	Attribut	Wert
Z	Total height [mm]	75 mm
S1	Width across flats [mm]	11 mm
T	Mounting thread [nominal dimension]	M7
X	Diameter [mm]	14 mm
A1	Length by which is extended [mm]	60 mm



Abbreviation	Attribut	Wert
Z	Total height [mm]	75 mm
S1	Width across flats [mm]	11 mm
T	Mounting thread [nominal dimension]	M7
X	Diameter [mm]	14 mm
A1	Length by which is extended [mm]	60 mm