

# 110-20 2-jaw universal puller "Techno" with locking pin, up to 200 mm spread, 150 mm reach



## DESCRIPTION

The 2-jaw universal puller "Techno" with locking pin is used for pulling bearings, gears, and discs in all common sizes for agriculture and workshops. It allows for loosening any component that sits on a shaft and is freely accessible from the outside. Equipped with consistently parallel and slender puller jaws, the puller ensures particularly safe, non-destructive disassembly during both external extraction and internal pulling. The locking pin prevents the puller jaws from slipping off the crossbar.

## APPLICATION AREA

For pulling off bearings, gears and pulleys

## BENEFIT

- The locking pin prevents the jaws from slipping off the crossbar.
- Optional convertible from an external puller to an internal extractor by reversing the jaws.
- Anti-slip safety (spindle neck) at the spindle head for safe working with a wrench
- Spindle outlet to protect the thread
- Secure setup of the spindle with a swiveling spindle tip on both smooth surfaces and during centering (Switch Technology)

## OPERATION

- Position the puller jaws from the outside onto the part to be removed
- Slide the claws under the component
- Manually pull the spindle for fixation
- Set the hexagon at the spindle head in motion with a ratchet or a box wrench until the component is loosened

## MASTER DATA

GTIN [EAN]	4021176923807
Country of origin	DE
Case material	Tool steel
Series	110
Net weight [kg]	2,645 kg
Package contents	1 piece
Packaging Act	PAP 21
Global sales capability given	Yes (REACH, RoHS, POP, PROP65, TSCA)

## SPARE PARTS

- 110-2-150-P\_2 puller (pair)
- 110-20-T\_Crossbar
- 616180\_Double-sided spindle tip
- 618175\_Mechanical spindle

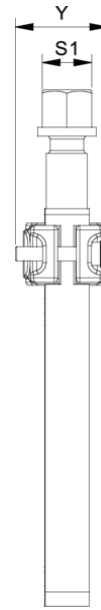
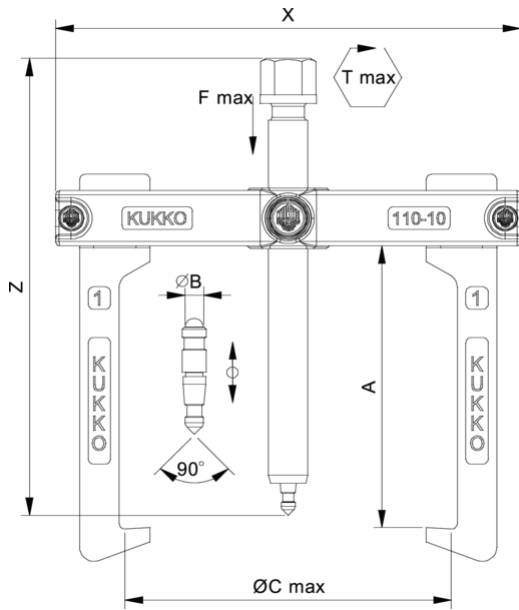
## APPLICATION IMAGE



## DETAIL IMAGE

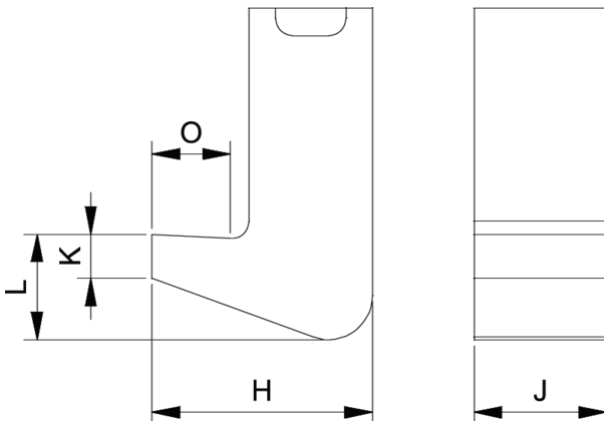


# 2-jaw universal puller "Techno" with locking pin, up to 200 mm spread, 150 mm reach



Abbreviation	Attribut	Wert
X	Total width [mm]	260 mm
Y	Total depth [mm]	35 mm
Z	Total height [mm]	200 mm
A	Clamping depth outside pull-off [mm]	150 mm
S1	Width across flats [mm]	19 mm
Cmin	Span outside pull-off (min.) [mm]	52 mm
Cmax	Span outside pull-off (max.) [mm]	200 mm
K	Hook root thickness at the tip (claw thickness K) [mm]	6 mm
J	Hook base width (claw width J) [mm]	18 mm
O	Hook base depth usable (claw depth usable O) [mm]	14 mm
H	Total hook root depth (total claw depth H) [mm]	30 mm
L	Total claw thickness (L+1mm) (claw distance to base surface) [mm]	14 mm
Emin	Span inside pull-out (min.) [mm]	115 mm
Emax	Span inside pull-out (max.) [mm]	230 mm
Tmax	Max. torque [Nm]	80 Nm
Fmax	Max. tractive force [t]	4 t
Fmax	Max. tensile force [kN]	40 kN

Abbreviation	Attribut	Wert
X	Total width [mm]	260 mm
Y	Total depth [mm]	35 mm
Z	Total height [mm]	200 mm
A	Clamping depth outside pull-off [mm]	150 mm
S1	Width across flats [mm]	19 mm
Cmin	Span outside pull-off (min.) [mm]	52 mm
Cmax	Span outside pull-off (max.) [mm]	200 mm
K	Hook root thickness at the tip (claw thickness K) [mm]	6 mm
J	Hook base width (claw width J) [mm]	18 mm
O	Hook base depth usable (claw depth usable O) [mm]	14 mm
H	Total hook root depth (total claw depth H) [mm]	30 mm
L	Total claw thickness (L+1mm) (claw distance to base surface) [mm]	14 mm
Emin	Span inside pull-out (min.) [mm]	115 mm
Emax	Span inside pull-out (max.) [mm]	230 mm
Tmax	Max. torque [Nm]	80 Nm
Fmax	Max. tractive force [t]	4 t
Fmax	Max. tensile force [kN]	40 kN



Abbreviation	Attribut	Wert
X	Total width [mm]	260 mm
Y	Total depth [mm]	35 mm
Z	Total height [mm]	200 mm
A	Clamping depth outside pull-off [mm]	150 mm
S1	Width across flats [mm]	19 mm
Cmin	Span outside pull-off (min.) [mm]	52 mm
Cmax	Span outside pull-off (max.) [mm]	200 mm
K	Hook root thickness at the tip (claw thickness K) [mm]	6 mm
J	Hook base width (claw width J) [mm]	18 mm
O	Hook base depth usable (claw depth usable O) [mm]	14 mm
H	Total hook root depth (total claw depth H) [mm]	30 mm
L	Total claw thickness (L+1mm) (claw distance to base surface) [mm]	14 mm
Emin	Span inside pull-out (min.) [mm]	115 mm
Emax	Span inside pull-out (max.) [mm]	230 mm
Tmax	Max. torque [Nm]	80 Nm
Fmax	Max. tractive force [t]	4 t
Fmax	Max. tensile force [kN]	40 kN