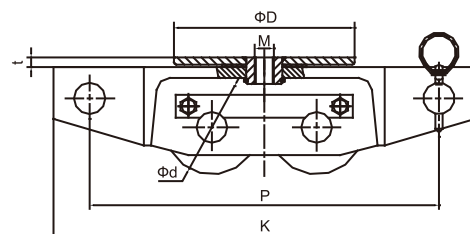
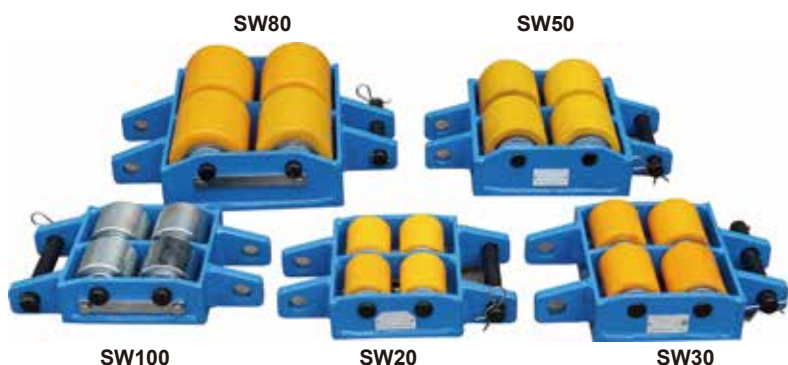
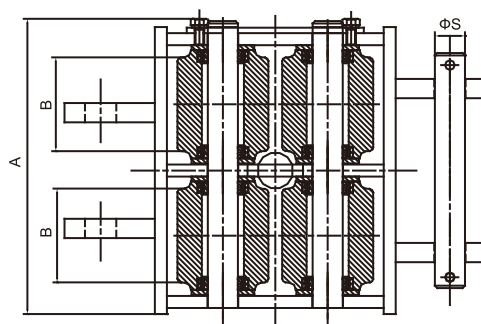


Skates

- ▲ Shifting skates can be used wherever heavy objects have to be moved.
The Load can be lifted using either the roller crowbar or a jack, allowing the skates to be easily positioned.
- ▲ The large diameter sealed nylon rollers ensure ease of movement and spread the load, protecting high quality floors from damage by high point loads and oil/grease contamination.
- ▲ The skates are maintenance free and are fitted with handles for ease of carrying and positioning. The platforms of the skates are fitted with a rubber surface which helps stability and protect the object being moved.

Skates Fixed Type SW series



i-Lift No.		1910101	1910102	1910103	1910104	1910105
Model		SW20	SW30	SW50	SW80	SW100
Max.Capacity	kg(lb.)	2000(4400)	3000(6600)	5000(11000)	8000(17600)	10000(22000)
Net Weight	kg(lb.)	13(28.6)	17(37.4)	32(70.4)	42(93)	20(44)
Running Resistance	Steel Road Surface	0.05	0.05	0.05	0.05	0.03
	Concrete Road Surface	0.07	0.07	0.07	0.07	0.07
Frame	A (mm)(in.)	214(8.4)	244(9.6)	284(11.2)	344(13.5)	204(8)
	K (mm)(in.)	330(13)	350(13.8)	400(16)	460(18.1)	350(13.8)
	P (mm)(in.)	270(10.6)	290(11.4)	340(13.4)	400(16)	290(11.4)
	H (mm)(in.)	84(3.3)	94(3.7)	124(4.9)	144(5.7)	99(3.9)
	g (mm)(in.)	15(0.6)	14(0.6)	29(1.1)	34(1.3)	19(0.7)
	ΦS (mm)(in.)	26(1)	26(1)	26(1)	31(1.2)	26(1)
Roller	Type	Urethane	Urethane	Urethane	Urethane	Steel
	Pcs	4	4	4	4	4
	Φd (mm)(in.)	65(2.5)	75(3)	100(4)	120(4.7)	78(3)
Turn Table	B (mm)(in.)	75(3)	90(3.5)	110(4.4)	140(5.5)	70(2.8)
	ΦD (mm)(in.)	150(6)	150(6)	180(7)	240(9)	150(6)
	t (mm)(in.)	6(0.2)	6(0.2)	9(0.4)	9(0.4)	6(0.2)
	M	M16	M16	M20	M20	M16

Handle as option.